



**Professional
Multi-Format
Broadcast
Color Grading Monitors**

2025/2026 Line-up

From independent film operators & ENG professionals to OB vans and major broadcast productions, TVLogic has been a trusted partner for years.

**Premium technology,
exceptional durability,
and the widest color
gamut coverage.**



Field Monitors	
F-7HS	4
F-10H	5
SVM-130P	6
SVM-183P	7
FHD Monitors	
LVM-096A	8
LVM-180A	10
LVM-181S	11
LVM-246A	12
LVM-242S	13
SVM-183S	14
SVM-243S	14
SVM-323S	14
4K / UHD Monitors	
LUM-096G	16
LUM-181G	17
LUM-242G	18
LUM-430M3	19
LUM-550M3	20
LXM-180U	21
LXM-180P	22
LXM-240U	23
LXM-240P	24
LXM-320P	25
LXM-550U	26
LXM-180P-FM	27
LXM-240P-FM	28
Rack Mount Monitors	
R-5T	29
R-7D	30
R-9D	31
R-5T/R-7D/R-9D Specifications	32
Wall & SFP Monitors	
S-42P-N	35
S-46P-N	36
S-55P	37
Key Features of the LXM & SVM Series	38
Comparison sheets	40

F-7HS 1,800nits

7" FHD Field Monitor with Enhanced Sharpness



Dimensions

Main Body 211 x 125 x 28.3 (mm) / 8.3 x 4.92 x 1.11 (inch)

Weight 0.76kg / 1.67lbs

Product Highlights

- 7" Full HD Resolution (1920 x 1200)
- Luminance up to 1,800nits
- HDMI ↔ SDI Cross Conversion
- HDR (PQ, HLG, S-Log3)
- Custom 3D LUT Import by USB Flash Drive
- Various Built-in Camera LUTs
- ARRI Metadata
- Excellent Sharpness
- Peaking Boost
- Waveform / Vectorscope
- H/V Flip
- Marker
- Split Zoom
- Focus Assist
- 16ch Audio Level Meter
- Anamorphic Desqueeze
- Timecode Display
- Luma(Y) Zone Check
- Screen Tally



Info & ordering

Monitor In-/Output



Size	7"
Resolution	1920 x 1200 (16:10)
Pixel Pitch	0.0787 mm
Color Depth	1.073B Colors (10 bit)
Viewing Angle	160°(H) / 160°(V)
Luminance of white	1800 nits(Max)
Contrast Ratio	1200:1
Display Area	151.2(H) x 94.5(V) mm
Input	
1 x HDMI	HDMI Input
1 x BNC	SDI Input
Output	
1 x HDMI	HDMI Output (HDMI loop out, SDI-to-HDMI Conversion output)
1 x BNC	SDI Output (SDI loop out, HDMI-to-SDI Conversion output)
Input Signal	
3G-SDI	2.970Gb/s
HD-SDI	1.485Gb/s
SD-SDI	270Mb/s
HDMI	1080p(60)/1080i(60)/720p(60)/480p(60)/576p(50)
SDI Input Signal Formats	
SMPTE ST-425M-A/B	1080p(60/59.94/50/30/29.97/25/24/23.98/30sF/29.97sF/25sF/24sF/23.98sF) 1080i(60/59.94/50)
SMPTE ST-274M	1080i (60/59.94/50) 1080p (30/29.97/25/24/24sF/23.98/23.98sF)
SMPTE ST-296M	720p (60/59.94/50)
SMPTE ST-125M	480i (59.94)
ITU-R BT.656	576i (50)
Audio In	SDI Embedded Audio (Group, Ch Selectable)
Audio Out	External Output Port (3.5mm Phone Jack)
Power	DC 12V 1.8A
Power Consumption (Approx.)	21 Watt (Max)
Weight	0.76kg / 1.67lbs
Included Accessories	D-Tap Cable, Camera Mount

F-10H 1,400nits

10" FHD High Brightness Field Monitor



Dimensions

Main Body 258 x 154 x 29.8(mm) / 10.15 x 6.06 x 1.17(inch)

Weight 1.2kg / 2.65lbs

Product Highlights

- 10", Full HD Resolution (1920 x 1200)
- 4K Compatible
- Max Luminance 1400nits
- DCI-P3 Coverage 95%
- Tempered Glass Treatment
- HDR (PQ / HLG / Slog3)
- Camera LUTs (Log-C, C-Log, S-Log1/2/3, Red Gamma3/4)
- Custom 3D-LUT Import
- Sharpness + Peaking Boost
- ARRI Metadata Display
- Scan / Anamorphic Desqueeze / Zoom / Split Zoom
- 3 x 3G SDI (1 x 3G SDI Selectable I/O)
- HDMI ↔ SDI Cross Conversion
- Luma(Y) Zone Check (Zebra / Color)
- H/V Flip, Auto Flip
- Horizontal Meter
- Waveform / Vectorscope
- DC 12V ~ 34V



Info & ordering

Monitor In-/Output



Size	10"
Resolution	1920 x 1200 (16:10)
Pixel Pitch	0,1128(H) x 0,1128(V) mm
Color Depth	16.7M Colors (8 bit)
Viewing Angle	170°(H) / 170°(V)
Brightness	1400cd/m2
Contrast Ratio	1100 : 1
Display Area	216.58(H) x 135.36(V) mm
Input	
SDI	1 x 3G-SDI Input 1 x 3G-SDI In/Out Selectable
HDMI	1 x HDMI 2.0 Input
Output	
SDI	1 x 3G-SDI Output (HDMI-to-SDI Conversion Output)
HDMI	1 x HDMI Output (SDI-to-HDMI Conversion Output)
General	
Audio In	Embedded Audio
Audio Out	Analog Stereo (3.5mm Phone Jack)
Power	DC 12V 1.6A
Power Consumption	20 Watts
Operating Temperature	0°C to 40°C (32°F to 104°F)
Storage Temperature	-20°C to 60°C (-4°F to 140°F)
Dimensions	
Main Body	258.0 x 154.0 x 29.8(mm) 10.15 x 6.06 x 1.17(inch)
Shipping Box	320.0 x 240.0 x 87.0(mm) 12.59 x 9.44 x 3.42(inch)
Weight	1.2kg / 2.65lbs
Basic Accessories	D-Tap Cable Camera Mount
Optional Accessories	DV Battery Bracket V-mount Bracket G-Mount Bracket Carrying Case Sun Hood DC Power Adapter

SVM-130P 1,500nits

13.9" 12G-SDI High Brightness Field Monitor

- 12G**
SDI
- 1500**
nits
- HDR**
- 3D**
LUT
- Dual
Battery
Brackets
- PBP**



Dimensions

Main Body 376.8 x 302.5 x 130 (mm) / 14.83 x 11.90 x 5.11 (inch)

Weight 5.34kg / 11.77lbs

Product Highlights

- 1500nits High Brightness Display
- 2 x 12G-SDI Input and Loopout
- 12G-SDI Input to 3G-SDI Downscale Output
- Processed Monitor Output
- Cheese Plates, C-stand Mountable
- Dual Battery Brackets (V-Mount, G-Mount)
- Picture-by-Picture Display
- HDR (PQ, HLG, S-LOG3)
- Custom 3D LUT Import by USB Flash Drive
- Auto Detection of SDI Payload ID
- Image Capture & Overlay
- Waveform (YCbCr, RGB) / Vector Scope / Histogram
- Audio Level Meter / Audio Phase Meter
- Fast Mode
- Focus Assist / Marker
- Blue/Mono Only / Timecode Display
- Remote Control & FW Update via Ethernet
- H Flip, V Flip

Size	13.9"
Resolution	1920 x 1080 (16:9)
Pixel Pitch	0.1605(H) x 0.1605(H) mm
Color Depth	16.7M Colors
Viewing Angle	178°(H)/178°(V)
Luminance of white	1500nits
Contrast Ratio	1200:1
Display Area	308.16(H) x 173.34(V) mm

Input	
2 x BNC	12G/6G/3G/HD/SD-SDI A/B Input
3 x BNC	YPbPr, CVBS Input
1 x HDMI	HDMI 1.4 Input
1 x BNC	Reference Input

Output	
2 x BNC	12G/6G/3G/HD/SD-SDI A/B Channel Output
3 x BNC	YPbPr, CVBS Output
1 x BNC	Processed Output

SDI Input Signal Formats

SMPTE ST 2082	3840x2160 (60/50/30/25/24p)
SMPTE ST 2081	3840x2160 (30/25/24p)
SMPTE ST 2036-1:2009	3840x2160(23.98/24/25/29.97/30/50/59.94/60p)
SMPTE-425M-A/B	1080p(60/59.94/50/30/29.97/25/24/23.98 /30sF/29.97sF/25sF/24sF/23.98sF)
1080i (60/59.94/50)	
SMPTE-274M	1080i (60/59.94/50)
1080p (30/29.97/25/24/24sF/23.98/23.98sF)	
SMPTE-296M	720p (60/59.94/50)
SMPTE-260M	1035i (60/59.94)
SMPTE-125M	480i (59.94)
ITU-R BT.656	576i (50)

SMPTE ST 2048-2:2011	2048x1080(23.98/24/25/29.97/30p/psf, 47.95/48/50/59.94/60p)
----------------------	---

Audio In	Analog Stereo (Phone Jack)
----------	----------------------------

Audio Out	Internal Stereo Speakers / Analog Stereo (Phone Jack)
-----------	---

Power	DC 12V/24V
-------	------------

Power Consumption	TBD
-------------------	-----

Included Accessories	Stand, Handle, V-Mount, Cheese Plate, Screen Protection Film
----------------------	--



Monitor In-/Output



Info & ordering

SVM-183P 1,500nits

18.5" 12G-SDI High Brightness Field Monitor

- 12G**
SDI
- 1500**
nits
- HDR**
- 3D**
LUT
- Dual
Battery
Brackets
- PBP**



Dimensions

Main Body 484.8 x 339.50 x 130 (mm) / 19.08 x 13.36 x 5.11 (inch)

Weight 7.1kg / 15.65lbs

Product Highlights

- 1500nits High Brightness Display
- 2 x 12G-SDI Input and Loopout
- 12G-SDI Input to 3G-SDI Downscale Output
- Processed Monitor Output
- Cheese Plates, C-stand Mountable
- Dual Battery Brackets (V-Mount, G-Mount)
- Picture-by-Picture Display
- HDR (PQ, HLG, S-LOG3)
- Custom 3D LUT Import by USB Flash Drive
- Auto Detection of SDI Payload ID
- Image Capture & Overlay
- Waveform (YCbCr, RGB) / Vector Scope / Histogram
- Audio Level Meter / Audio Phase Meter
- Fast Mode
- Focus Assist / Marker
- Blue/Mono Only / Timecode Display
- Remote Control & FW Update via Ethernet
- H Flip, V Flip

Size	18.5"
Resolution	1920 x 1080 (16:9)
Pixel Pitch	0.2130(H) x 0.2130(V) mm
Color Depth	16.7M Colors
Viewing Angle	178°(H)/178°(V)
Luminance of white	1500nits
Contrast Ratio	1000:1
Display Area	08.96(H) x 230.04(V) mm

Input	
2 x BNC	12G/6G/3G/HD/SD-SDI A/B Input
3 x BNC	YPbPr, CVBS Input
1 x HDMI	HDMI 1.4 Input
1 x BNC	Reference Input

Output	
2 x BNC	12G/6G/3G/HD/SD-SDI A/B Channel Output
3 x BNC	YPbPr, CVBS Output
1 x BNC	Processed Output

SDI Input Signal Formats

SMPTE ST 2082	3840x2160 (60/50/30/25/24p)
SMPTE ST 2081	3840x2160 (30/25/24p)
SMPTE ST 2036-1:2009	3840x2160(23.98/24/25/29.97/30/50/59.94/60p)
SMPTE-425M-A/B	1080p(60/59.94/50/30/29.97/25/24/23.98 /30sF/29.97sF/25sF/24sF/23.98sF)
1080i (60/59.94/50)	
SMPTE-274M	1080i (60/59.94/50)
1080p (30/29.97/25/24/24sF/23.98/23.98sF)	
SMPTE-296M	720p (60/59.94/50)
SMPTE-260M	1035i (60/59.94)
SMPTE-125M	480i (59.94)
ITU-R BT.656	576i (50)

SMPTE ST 2048-2:2011	2048x1080(23.98/24/25/29.97/30p/psf, 47.95/48/50/59.94/60p)
----------------------	---

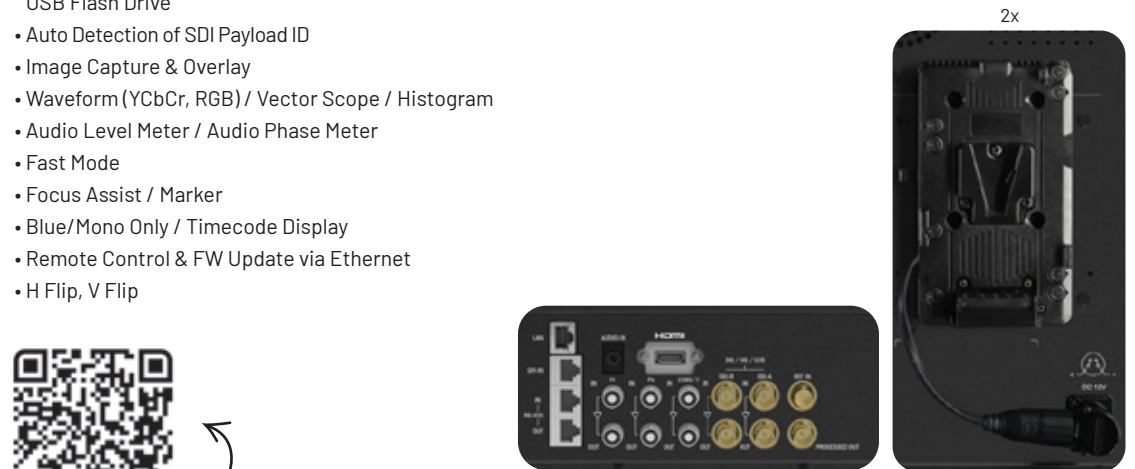
Audio In	Analog Stereo (Phone Jack)
----------	----------------------------

Audio Out	Internal Stereo Speakers / Analog Stereo (Phone Jack)
-----------	---

Power	DC 12V/24V
-------	------------

Power Consumption	TBD
-------------------	-----

Included Accessories	Stand, Handle, V-Mount, Cheese Plate, Screen Protection Film
----------------------	--



Monitor In-/Output



Info & ordering

LVM-096A 1,000nits

10" FHD Multi-Purpose Monitor



Dimensions

Main Body 254 x 175 x 60 (mm) / 10 x 6.89 x 2.36 (inch)

With Stand 295.2 x 194.2 x 90 (mm) / 11.62 x 7.65 x 3.54 (inch)

Weight 2.4Kg / 5.29lbs

Product Highlights

- 10", Full HD Resolution (1920x1200)
- Waveform / Vectorscope
- 16ch Audio Level Meter
- Focus Assist
- Marker
- Timecode Display
- Dynamic UMD
- Blue/Mono Only
- HNDelay
- Luma(Y') Zone Check
- Range Error
- SCAN / Pixel-to-Pixel
- Zoom
- User Aspect
- Closed Caption (CC-608, CC-708)
- Various Scan Modes
- Tally
- GPI Control



Info & ordering



Monitor In-/Output

LVM-180A

18.5" FHD Professional LCD Monitor



Dimensions

Main Body 442.5 x 309.2 x 65.3 (mm) / 17.42 x 12.17 x 2.57 (inch)

With Stand 483.5 x 332.89 x 137.5 (mm) / 19.03 x 13.1 x 5.41 (inch)

Weight 5.6kg / 12.34lbs

Product Highlights

- 18.5" Full HD Resolution (1920 x 1080)
- Waveform / Vectorscope
- 16ch Audio Level Meter
- Focus Assist
- Marker
- Timecode Display
- Dynamic UMD
- Blue/Mono Only
- H/V Delay
- Luma(Y) Zone Check
- Range Error
- User Aspect
- Various Scan Modes
- Closed Caption (CC-608, CC-708)
- Tally
- Eco Mode



Info & ordering

Size	18.5"
Resolution	1920 x 1080 (16:9)
Pixel Pitch	0.213 mm
Color Depth	16.7M Colors (True 8bit)
Viewing Angle	178°(H)/178°(V)
Luminance of White	500nits
Contrast Ratio	1000:1
Display Area	408.96(H) x 230.04(V) mm

Input	
2 x BNC	SDI A/B Channel Input
1 x HDMI	HDMI Input
1 x BNC	Analog Input
1 x DVI-I	DVI Input
Output	
1 x BNC	SDI Channel (Active Through Out)
1 x BNC	Analog Output
Input Signal	
3G-SDI	2.970Gb/s
HD-SDI	1.485Gb/s
SD-SDI	270 Mb/s
HDMI	1080p(60)/1080i(60)/720p(60)/480p(60)/576p(50)
Analog	Composite
DVI	VESA/IBM Modes

SDI Input Signal Formats	
SMPTE-425M-A/B	1080p(60/59.94/50/30/29.97/25/24/23.98/30sF/29.97sF/25sF/24sF/23.98sF)
	1080i(60/59.94/50)
SMPTE-274M	1080i(60/59.94/50)
	1080p (30/29.97/25/24/24sF/23.98/23.98sF)
SMPTE-296M	720p (60/59.94/50)
SMPTE-260M	1035i (60/59.94)
SMPTE-125M	480i (59.94)
ITU-R BT.656	576i (50)
Audio In	Embedded Audio / Analog Stereo (Phone Jack)
Audio Out	Internal Speaker (Stereo) / Analog Stereo (Phone Jack)
Power	DC 12V / AC100~240V(50~60Hz)
Power Consumption (Approx.)	30Watts
Included Accessories	AC Power Cord, Table Stand



Monitor In-/Output

LVM-181S

18.5" FHD High-End LCD Monitor



Dimensions

Main Body 442.5 x 309 x 70 (mm) / 17.42 x 12.16 x 2.75 (inch)

With Stand 489.7 x 332.8 x 137.5 (mm) / 19.27 x 13.1 x 5.41 (inch)

Weight 7kg / 15.43lbs

Product Highlights

- 18.5" Full HD Resolution (1920 x 1080)
- HDR (PQ, HLG, SLOG3)
- PBP (Picture by Picture)
- Custom 3D LUT Import by USB Flash Drive
- Various Built-in Camera LUTs
- Ember + Protocol support
- Fast Mode
- Dual Markers (Main & Sub)
- Waveform / Vectorscope (Advanced)
- 16ch Audio Level Meter
- Timecode Display
- Dynamic UMD
- H/V Delay
- User Aspect
- Various Scan Modes
- Closed Caption (CC-608/708, CC-KOR, OP47)
- Focus Assist



Info & ordering

Size	18.5"
Resolution	1920 x 1080 (16:9)
Pixel Pitch	0.213 mm
Color Depth	1.06B Colors
Viewing Angle	178°(H)/178°(V)
Luminance of White	500nits
Contrast Ratio	1000:1
Display Area	408.96(H) x 230.04(V) mm

Input	
2 x BNC	SDI A/B Channel Input
1 x HDMI	HDMI Input
3 x BNC	Analog Input
1 x DVI-I	DVI-I(RGB) Input
Output	
2 x BNC	SDI A/B Channel (Loop Through Out)
3 x BNC	Analog Output
Input Signal	
3G-SDI	2.970Gb/s
HD-SDI	1.485Gb/s
SD-SDI	270 Mb/s
HDMI	1080p(60)/1080i(60)/720p(60)/480p(60)/576p(50)
Analog	CVBS / Component / RGB
DVI-D (PC mode)	640x480/800x600/1024x768/1366x768
DVI-D (HDMI mode)	1080i(60) / 720i(60) / 480i(60) / 480p(50)

Analog Input Spec	
CVBS	1.0Vpp (with Sync)
Component	1.0Vpp (Y with Sync), 0.7Vpp (Pb,Pr)
RGB	1.0Vpp (G With Sync), 0.7Vpp (B,R)

SDI Input Signal Formats	
SMPTE-425M-A/B	1080p(60/59.94/50/30/29.97/25/24/23.98/30sF/29.97sF/25sF/24sF/23.98sF)
	1080i(60/59.94/50)
SMPTE-274M	1080i(60/59.94/50)
	1080p (30/29.97/25/24/24sF/23.98/23.98sF)
SMPTE-296M	720p (60/59.94/50)
SMPTE-260M	1035i (60/59.94)
SMPTE-125M	480i (59.94)
ITU-R BT.656	576i (50)
2K Format	2048 x 1080(23.98p/psf, 24p/psf)
Audio In	Embedded Audio / Analog Stereo (Phone Jack)
Audio Out	Internal Speaker (Stereo) / Analog Stereo (Phone Jack)
Power	DC 12V / AC100~240V(50~60Hz)
Power Consumption (Approx.)	30Watts
Included Accessories	AC Power Cord, Table Stand



Monitor In-/Output

LVM-246A

24" Full HD Professional LCD Monitor



Dimensions

Main Body 552.5 x 389 x 79.4 (mm) / 21.75 x 15.31 x 3.12 (inch)

With Stand 586.1 x 416.8 x 150 (mm) / 23.07 x 16.4 x 5.9 (inch)

Weight 10.06kg / 22.17lbs

Product Highlights

- 24" Full HD Resolution (1920 x 1200)
- Waveform / Vectorscope
- 16ch Audio Level Meter
- Focus Assist
- Marker
- Timecode Display
- Dynamic UMD
- Blue/Mono Only
- H/V Delay
- Luma(Y) Zone Check
- Range Error
- User Aspect
- Various Scan Modes
- Closed Caption (CC-608, CC-708)
- Tally
- Eco Mode



Info & ordering

Size	24"
Resolution	1920 x 1200 (16:10)
Pixel Pitch	0.27 mm
Color Depth	16.7M Colors (True 8bit)
Viewing Angle	178°(H) / 178°(V)
Luminance of white	600nits
Contrast Ratio	1000:1
Display Area	518.4(H) x 324.0(V) mm

Input	
2 x BNC	SDI A/B Channel Input
1 x HDMI	HDMI Input
3 x BNC	Analog Video Input
1 x DVI-I	DVI-IN
Output	
1 x BNC	SDI Channel (Active Through Out)
3 x BNC	Analog Video Output
Input Signal	
3G-SDI	2.970Gb/s
HD-SDI	1.485Gb/s
SD-SDI	270 Mb/s
HDMI	1080p(60)/1080i(60)/720p(60)/480p(60)/576p(50)
Analog	Composite
DVI	VESA/IBM Modes
SDI Input Signal Formats	
SMPTE-425M-A/B	1080p (60/59.94/50/30/29.97/25/24/23.98/30sF/29.97sF/25sF/24sF/23.98sF)
	1080i (60/59.94/50)
SMPTE-274M	1080i (60/59.94/50)
	1080p (30/29.97/25/24/24sF/23.98/23.98sF)
SMPTE-296M	720p (60/59.94/50)
SMPTE-260M	1035i (60/59.94)
SMPTE-125M	480i (59.94)
ITU-R BT.656	576i (50)
Audio In	Embedded Audio / Analog Stereo (Phone Jack)
Audio Out	Internal Speaker (Mixed Mono) / Analog Stereo (Phone Jack)
Power	DC 12~24V / AC100~240V(50~60Hz)
Power Consumption (Approx.)	115W
Included Accessories	AC Power Cord, Table Stand



Monitor In-/Output

LVM-242S

24" FHD QC Grade LCD Monitor



Dimensions

Main Body 552.5 x 389 x 98.5 (mm) / 21.75 x 15.31 x 3.87 (inch)

With Stand 586.13 x 416.8 x 150 (mm) / 23.07 x 16.4 x 5.9 (inch)

Weight 10.68kg / 23.54lbs

Product Highlights

- 24" Full HD Resolution (1920 x 1200)
- 1.07B Colors (10 bit)
- 98% Coverage of DCI-P3 Color Gamut
- HDR (PQ, HLG, SLOG3)
- PBP (Picture by Picture)
- Custom 3D LUT Import by USB Flash Drive
- Various Built-in Camera LUTs
- Ember + Protocol support
- Fast Mode
- Waveform / Vectorscope (Advanced)
- 16ch Audio Level Meter
- Timecode Display
- Dual Markers (Main & Sub)
- Dynamic UMD
- User Aspect
- Various Scan Modes
- Closed Caption (CC-608/708, CC-KOR, OP47)
- Focus Assist



Info & ordering

Size	24"
Resolution	1920 x 1200 (16:10)
Pixel Pitch	0.270 mm
Color Depth	1.07B Colors
Luminance of white	400nits
Contrast Ratio	1800:1
Active Area	518.4(H) x 324.0(V) mm

Input	
2 x BNC	SDI A/B Channel Input
1 x HDMI	HDMI Input
3 x BNC	Analog Input
1 x DVI-I	DVI-I(RGB) IN
Output	
2 x BNC	SDI A/B Channel (Loop Through Out)
3 x BNC	Analog Output
Input Signal	
3G-SDI	2.970Gb/s
HD-SDI	1.485Gb/s
SD-SDI	270 Mb/s
Analog	CVBS / Component / RGB
DVI-D (PC mode)	640x480/800x600/1024x768/1366x768
DVI-D (HDMI mode)	1080i(60) / 720i(60) / 480i(60) / 480p(50)
HDMI	480i(60) / 480p(60) / 576i(50) / 576p(50) / 720p(60) / 1080i(60) / 1080p(60)
Analog Input Spec	
CVBS	1.0Vpp (with Sync)
Component	1.0Vpp (Y with Sync), 0.7Vpp (Pb,Pr)
RGB	1.0Vpp (G With Sync), 0.7Vpp (B,R)
SDI Input Signal Formats	
SMPTE-425M-A/B	1080p (60/59.94/50/30/29.97/25/24/23.98/30sF/29.97sF/25sF/24sF/23.98sF)
	1080i (60/59.94/50)
SMPTE-274M	1080i (60/59.94/50)
	1080p (30/29.97/25/24/24sF/23.98/23.98sF)
SMPTE-296M	720p(60/59.94/50)
SMPTE-260M	1035i (60/59.94)
SMPTE-125M	480i (59.94)
ITU-R BT.656	576i (50)
2K Format	2048 x 1080(23.98p/psf, 24p/psf)
Audio In	Embedded Audio / Analog Stereo (Phone Jack)
Audio Out	Analog Stereo (Phone Jack), Internal Speaker(Stereo)
Power	DC 12~24V / AC100~240V(50~60Hz)
Power Consumption (Approx.)	65 Watt (Max)
Included Accessories	AC Power Cord, Table Stand



Monitor In-/Output

SVM-183S 18.5" 12G-SDI with Full HD LCD Monitor

- 12G SDI
- SFP
- HDR
- 3D LUT
- Fast mode
- PBP



Dimensions

Main Body 442.5 x 309 x 84 (mm) / 17.42 x 12.16 x 3.30 (inch)
With Stand 489.3 x 332.8 x 137.5 (mm) / 19.26 x 13.1 x 5.41 (inch)
Weight 7.3kg / 16.09lbs



Info & ordering

SVM-243S 24" 12G-SDI with Full HD LCD Monitor

- 12G SDI
- HDR
- 98% DCI
- 10 bit Colors
- 3D LUT
- PBP



Dimensions

Main Body 552.5 x 389 x 79.4 (mm) / 21.75 x 15.31 x 3.12 (inch)
With Stand 586.1 x 416.8 x 150 (mm) / 23.07 x 16.4 x 5.9 (inch)
Weight 10.0kg / 22.04lbs



Info & ordering

SVM-323S 32" 12G-SDI with Full HD LCD Monitor

- 12G SDI
- SFP
- HDR
- 3D LUT
- Fast mode
- PBP



Dimensions

Main Body 733.4 x 464.1 x 84.7 (mm) / 28.87 x 18.27 x 3.33 (inch)
With Stand 733.4 x 512.6 x 245 (mm) / 28.87 x 20.18 x 9.64 (inch)
Weight 13.6kg / 29.98lbs



Info & ordering

	SVM-183S	SVM-243S	SVM-323S
LCD Panel			
Size	18.5"	24"	31.5"
Resolution	1920 x 1080 (16:9)	1920 x 1200 (16 : 10)	1920 x 1080 (16 : 9)
Pixel Pitch	0.213(H) x 0.213(V) mm	0.270(H) x 0.270(V) mm	0.363(H) x 0.363(V) mm
Color Depth	16.7M Colors	1.07B colors	16.7M colors
Viewing Angle	178°(H) / 178°(V)	178°(H) / 178°(V)	178°(H) / 178°(V)
Luminance of white	500cd/m2	400cd/m2	400cd/m2
Contrast Ratio	1000 : 1	1800:1	1200:1
Display Area	408.96(H) x 230.04(V) mm	518(H) x 324(V) mm	698(H) x 393(V) mm
Input			
2 x BNC	12G/6G/3G/HD/SD-SDI A/B Input		
3 x BNC	YPbPr, CVBS Input		
1 x HDMI	HDMI Input		
2 x SFP	SFP A/B Channel Input		
1 x BNC	Reference Input		
Output			
2 x BNC	12G/6G/3G/HD/SD-SDI A/B Channel Output		
3 x BNC	YPbPr, CVBS Output		
1 x BNC	Processed Output		
SDI Input Signal Formats			
SMPTE ST 2082	2160(60/50/30/25/24p)		
SMPTE ST 2081	2160(30/25/24p)		
SMPTE ST 2036-1:2009	2160(23.98/24/25/29.97/30/50/59.94/60p)		
SMPTE-425M-A/B	1080p(60/59.94/50/30/29.97/25/24/23.98/30sF/29.97sF/25sF/24sF/23.98sF)		
	1080i(60/59.94/50)		
SMPTE-274M	1080i(60/59.94/50)		
	1080p(30/29.97/25/24/24sF/23.98/23.98sF)		
SMPTE-296M	720p(60/59.94/50)		
SMPTE-260M	1035i(60/59.94)		
SMPTE-125M	480i(59.94)		
ITU-R BT.656	576i(50)		
SMPTE ST 2048-2:2011	2048x1080(23.98/24/25/29.97/30p/psf, 47.95/48/50/59.94/60p)		
Remote Control & Update			
1 x LAN	RJ-45 Input(Ethernet), Firmware Update & Remote Control		
1 x REMOTE	RJ-45 Input, GPI Control		
2 x RS-422	RJ-45 Input & Output, Monitor Control by TVLogic Protocol or TSL Protocol		
1 x USB	USB A type, Firmware Update		
General			
Audio In	Analog Stereo (Phone Jack)		
Audio Out	Internal Stereo Speakers, Analog Stereo (Phone Jack)		
Power	AC100~240V(50~60Hz) DC 12V/24V	AC100~240V(50~60Hz) DC 12V/24V	AC100~240V(50~60Hz)
Power Consumption	30W	TBD	TBD
Operating Temperature	0°C to 35 °C (32 °F to 95 °F)	0°C to 35 °C (32 °F to 95 °F)	0°C to 35 °C (32 °F to 95 °F)
Storage Temperature	-20 °C to 60 °C (-4 °F to 140 °F)	-20 °C to 60 °C (-4 °F to 140 °F)	-20 °C to 60 °C (-4 °F to 140 °F)
Dimensions : Main Body	442.5 x 309 x 84 (mm) 17.42 x 12.16 x 3.30 (inch)	552.5 x 389 x 79.4 (mm) 21.75 x 15.31 x 3.12 (inch)	733.4 x 464.1 x 84.7 (mm) 28.87 x 18.27x 3.33 (inch)
	489.3 x 332.8 x 137.5 (mm) 19.26 x 13.1 x 5.41 (inch)	586.1 x 416.8 x 150 (mm) 23.07 x 16.4 x 5.9 (inch)	733.4 x 512.6 x 245 (mm) 28.87 x 20.18 x 9.64 (inch)
Dimensions : With Stand	550 x 460 x 300 mm 21.65 x 18.11 x 11.81 inch	680 x 540 x 300 mm 26.77 x 21.26 x 11.81 inch	920 x 360 x 790 mm 36.22 x 14.17 x 31.10 inch
	550 x 460 x 300 mm 21.65 x 18.11 x 11.81 inch	680 x 540 x 300 mm 26.77 x 21.26 x 11.81 inch	920 x 360 x 790 mm 36.22 x 14.17 x 31.10 inch
Weight (with stand)	7.3kg / 16.09lbs	10.0kg / 22.04lbs	13.6kg / 29.98lbs
Basic Accessories	AC Power Cord, Stand, Handle	AC Power Cord, Stand	AC Power Cord, Stand, Handle
Optional Accessories	V-mount, G-mount Acrylic Filter, Rack Mount Kit Carrying Case, Sun Hood	V-mount, G-mount Acrylic Filter, Rack Mount Kit Carrying Case	-

*The specifications above may be changed without notice.

LUM-096G 1,000nits

10" 4K/UHD Multi-Purpose Monitor



Dimensions

Main Body 254 x 175 x 60 (mm) / 10 x 6.89 x 2.36 (inch)
With Stand 295.2 x 194.2 x 90 (mm) / 11.62 x 7.65 x 3.54 (inch)
Weight 2.44Kg / 4.71lbs

Product Highlights

- 10" Full HD Resolution (1920x1200)
- Max Luminance 1000nits
- DCI-P3 Coverage 95%
- 12G-SDI Single Link 4K/UHD
- 3G-SDI Quad-Link Square Division & 2-5.1. 4K/UHD
- HDR (PQ, HLG, S-Log3)
- Custom 3D LUT Import by USB Flash Drive
- Various Built-in Camera LUTs
- Waveform / Vectorscope
- 16ch Audio Level Meter
- Focus Assist
- Marker
- Timecode Display
- Dynamic UMD
- Blue/Mono Only
- H Flip & V Flip (Auto & Manual)
- Various Aspect
- Luma(Y) Zone Check



Info & ordering



LUM-181G

18.5" 4K/UHD Ready HDR LCD Monitor



Dimensions

Main Body 442.5 x 309 x 84 (mm) / 17.42 x 12.16 x 3.3 (inch)
With Stand 489.3 x 332.8 x 137.5 (mm) / 19.26 x 13.1 x 5.41 (inch)
Weight 6.52kg / 14.37lbs

Product Highlights

- 18.5" FHD Panel + 4K Interface
- HDR (PQ, HLG)
- 12G-SDI Single Link 4K/UHD
- 3G-SDI Quad-Link Square Division & 2-S.I. 4K/UHD
- Waveform / Vectorscope
- 16ch Audio Level Meter
- Focus Assist
- Marker
- Timecode Display
- UMD Display
- Blue/Mono Only
- Various Aspect
- Luma(Y) Zone Check
- Tally
- Range Error
- Closed Caption (CC-608, CC-708)
- H/V Delay



Info & ordering

Size	18.5"
Resolution	1920 x 1080 (16:9)
Pixel Pitch	0.213 mm
Color Depth	16.7M Colors (True 8 bit)
Viewing Angle	178° (H)/178° (V)
Luminance of white	500nits
Contrast Ratio	1000:1
Display Area	408.96(H) x 230.04(V) mm

Input	
4 x BNC	12G/6G/3G/HD-SDI A/B, 3G/HD-SDI C/D Channel Input
1 x HDMI	HDMI(2.0) Input

Output	
4 x BNC	12G/6G/3G/HD-SDI A/B, 3G/HD-SDI C/D Channel (Active Through Out)

Input Signal	
12G-SDI	12Gb/s
6G-SDI	6Gb/s
3G-SDI	2.970Gb/s
HD-SDI	1.485Gb/s
HDMI	2160p(60)/1080p(60)/1080i(60)/720p(60)/480i(60)/480p(60)/576i(50)/576p(50)

SDI Input Signal Formats	
SMPTE ST 2082	3840x2160 (60/50/30/25/24p)
SMPTE ST 2081	3840x2160 (30/25/24p)
SMPTE ST 2036-1:2009	3840x2160(23.98/24/25/29.97/30/50/59.94/60p) 1080p(60/59.94/50/30/29.97/25/24/23.98/30sF/29.97sF/25sF/24sF/23.98sF)
SMPTE-425M-A/B	1080i(60/59.94/50) 1080i (60/59.94/50)
SMPTE-274M	1080p (30/29.97/25/24/24sF/23.98/23.98sF)
SMPTE-296M	720p (60/59.94/50)
SMPTE-260M	1035i (60/59.94)
SMPTE-125M	480i (59.94)
ITU-R BT.656	576i (50)
SMPTE ST 2048-2:2011	2048x1080(23.98/24/25/29.97/30p/psf, 47.95/48/50/59.94/60p)

Audio In	Embedded Audio / Analog Stereo (Phone Jack)
Audio Out	Internal Speaker(Stereo) / Analog Stereo(Phone Jack)
Power	DC 12V / 24V / AC 100~240V(50~60Hz)
Power Consumption (Approx.)	65 Watt (Max)
Included Accessories	AC Power Cord, Table Stand, Control Knob Cap, Carry Handle

Color Innovation (LogiColor - new color engine & LogiCAL - new calibration software) is supported

Monitor In-/Output



LUM-242G

24" 4K/UHD HDR Monitor



Dimensions

Main Body 552.48 x 360.4 x 95.9(mm) / 21.75 x 14.18 x 3.77(inch)

With Stand 586.13 x 388.2 x 150(mm) / 23.07 x 15.28 x 5.90(inch)

Weight 10.3kg / 22.71lbs

Product Highlights

- 24" True UHD Resolution (3840x2160)
- 98% Coverage of DCI-P3 Color Gamut
- 1.07 Billion Colors (10bit)
- Peak Luminance 500nits
- HDR (PQ, HLG)
- 12G-SDI Single Link 4K/UHD
- 3G-SDI Quad-Link Square Division & 2-S.I. 4K/UHD
- Waveform / Vectorscope
- 16ch Audio Level Meter
- Focus Assist / Marker
- Timecode Display
- UMD Display
- Blue/Mono Only
- Various Aspect
- Luma(Y) Zone Check
- Closed Caption (CC-608, CC-708)
- H/V Delay
- Tally



Info & ordering



Monitor In-/Output

Size	24"
Resolution	3840 x 2160 (16:9)
Pixel Pitch	0.137mm
Color Depth	1.07B Colors (10bit)
Viewing Angle (Typ.)	178°(H)/178°(V)
Luminance (Max.)	500nits
Contrast Ratio	1200:1
Display Area	526(H)x296(V)mm

Input	
4 x BNC	12G-SDI A/B Channel Input, 3G-SDI C/D Channel Input
1 x HDMI	HDMI(2.0) Input

Output	
4 x BNC	12G-SDI A/B, 3G-SDI C/D Channel (Loop Through Out)

Input Signal	
12G-SDI	12Gb/s
6G-SDI	6Gb/s
3G-SDI	2.970Gb/s
HD-SDI	1.485Gb/s
HDMI	2160p(60)/1080p(60)/1080i(60)/720p(60)/480p(60)/576p(50)

SDI Input Signal Formats	
SMPTE ST 2082	2160p(60/50/59.94)
SMPTE ST 2081	2160p(30/25/24/23.98/29.97)
SMPTE-425M-A/B	1080i(60/59.94/50)
	1080p(60/59.94/50/30/29.97/25/24/23.98/30sF/29.97sF/25sF/24sF/23.98sF)
SMPTE-274M	1080i(60/59.94/50)
	1080p(30/29.97/25/24/23.98/24sF/23.8sF)
SMPTE-296M	720p(60/59.94/50)

SMPTE-259M	480i (59.94), 576i (50)
Audio In	Embedded Audio Analog Stereo(Phone Jack)
Audio Out	Internal Speaker(Stereo) Analog Stereo(Phone Jack)
Power	DC 12V / 24V / AC 100~240V(50~60Hz)
Power Consumption (Approx.)	85Watts
Operating Temperature	0°C to 35°C (32°F to 95°F)
Storage Temperature	-20°C to 60°C (-4°F to 140°F)
Included Accessories	AC Power Cable, Table Stand

Color Innovation (LogiColor - new color engine & LogiCAL - new calibration software) is supported

LUM-430M3

43" 4K/UHD HDR Wall Monitor



Dimensions

Main Body 985 x 587 x 87.4(mm) / 38.77 x 23.11 x 3.44(inch)

With Stand 985 x 636.4 x 245(mm) / 38.77 x 25.05 x 9.64(inch)

Weight 23.0kg / 50.70lbs

Product Highlights

- 43" True UHD Resolution (3840x2160)
- HDR (PQ, HLG, S-Log3)
- 12G-SDI Single Link 4K/UHD
- 3G-SDI Quad-Link Square Division & 2-S.I. 4K/UHD
- Waveform / Vectorscope
- Audio Level Meter
- Marker
- Timecode Display
- Closed Caption (CC-608, CC-708)
- IR Remote Control
- Ultra Slim Bezel



Monitor In-/Output



Info & ordering

Size	43"
Resolution	3840x2160(16:9)
Pixel Pitch	0.2451mm
Color Depth	1.07B Colors (10bit)
Viewing Angle (Typ.)	178°(H) / 178°(V)
Luminance (Typ.)	500nits
Contrast Ratio	1000:1
Display Area	941.2(H) x 529.4(V) mm

Input	
4 x BNC	12G/3G/HD/SD SDI Input 2Ch 3G/HD SDI Input 2Ch
1 x HDMI	HDMI(2.0) Input

Output	
1 x BNC	12G/3G/HD/SD SDI Output 1Ch (SDI A/B Selected channel output) 12G Mode : 3840x2160 60p/59.94p/50p

Input Signal	
12G-SDI	12Gb/s
6G-SDI	6Gb/s
3G-SDI	2.970Gb/s
HD-SDI	1.485Gb/s
HDMI	2160p(60)/1080p(60)/1080i(60)/720p(60)/480p(60)/576p(50)

SDI Input Signal Formats	
SMPTE ST2048-1	4096x2160 60p/50p/59.94p/30p/29.97p/25p/24p/23.98p
SMPTE ST2082-10 Model1	3840x2160 60p/59.94p/50p (12G-SDI x 2Ch)
SMPTE ST2081-10 Model1	3840x2160 30p/29.97p/25p/24p*/23.98p* (6G-SDI x 2Ch)
SMPTE ST425-5	3840x2160 60p/59.94p/50p (3G-SDI x 4Ch)
SMPTE ST274	3840x2160 30p/29.97p/25p/24p*/23.98p* (HD-SDI x 4Ch)
SMPTE ST425	1920x1080 60p/59.94p/50p (3G-SDI LEVEL A) 1920x1080 60i/59.94i/50i (3G-SDI LEVEL A) 1920x1080 30p/29.97p/25p/24p*/23.98p* (3G-SDI LEVEL B) 1280x720 60p/59.94p/50p (3G-SDI LEVEL B)
SMPTE ST2048-1:2110	2048x1080 23.98p/24p/25p/29.97p/30p
SMPTE 274M	1920x1080 30p/29.97p/25p/24p*/23.98p* 1920x1080 60i/59.94i/50i
SMPTE-296M	1280x720 60p/59.94p/50p
SMPTE-259M	720x487 59.94i / 720x576 50i

* 24P/23.97P : 60p/59.94p Frame-rate Converted Display

HDMI Input Signal Formats	
HDMI 2.0	3840x2160 60p/59.94p/50p (RGB 4:4:4, YCbCr 4:4:4, YCbCr 4:2:2 8/10/12bit, YCbCr 4:2:0 8bit)
HDMI 1.4	3840x2160 30p/29.97p/25p/24p*/23.98p* (RGB 4:4:4, YCbCr 4:4:4, YCbCr 4:2:2 8/10/12bit)
HDMI 1.2	1920x1080 60p/59.94p/50p/30p/29.97p/25p/24p*/23.98p* 1920x1080 60i/59.94i/50i 1280x720 60p/59.94p/50p (RGB 4:4:4, YCbCr 4:4:4, YCbCr 4:2:2 8bit)
Audio In	Embedded Audio
Audio Out	Analog Stereo(Phone Jack)
Power	100~240V, 1.3~0.6A/ 50/60Hz
Power Consumption	96Watts (Max.)
Operating Temperature	0°C to 40°C (32°F to 104°F)
Storage Temperature	-20°C to 60°C (-4°F to 140°F)
Included Accessories	AC Power Cable, IR Remote, Table Stand

LUM-550M3

55" 4K/UHD HDR Wall LCD Monitor



Dimensions

Main Body 1262 x 746 x 81.4(mm) / 49.68 x 29.37 x 3.2(inch)
With Stand 1262 x 794.5 x 245(mm) / 49.68 x 31.27 x 9.64(inch)
Weight 35.8kg / 78.92lbs

Product Highlights

- 54.6" True UHD Resolution (3840x2160)
- Peak Luminance 700nits
- Waveform / Vectorscope
- Audio Level Meter
- Marker
- Timecode Display
- Closed Caption (CC-608, CC-708)
- HDR (PQ, HLG, S-Log3)
- 12G-SDI Single Link 4K/UHD
- 3G-SDI Quad-Link Square Division & 2-S.I. 4K/UHD
- IR Remote Control
- Ultra Slim Bezel

Size	54.6"
Resolution	3840x2160(16:9)
Pixel Pitch	0.315 mm
Color Depth	1.07B Colors
Viewing Angle	178°(H) / 178°(V)
Luminance of white	700nits
Contrast Ratio	1100:1
Display Area	1209.6(H) x 680.4(V) mm

Input	
4 x BNC	12G/6G/3G/HD/SD-SDI Ch1/Ch2, 3G/HD /SD-SDI Ch3/Ch4
1 x HDMI	HDMI(2.0) Input
Output	
1 x BNC	12G/3G/HD/SD-SDI Output 1 Ch By Pass Mode : SDI A/B Channel (Active Through Out) 12G Mode : 3840x2160 60p/59.94p/50p

Input Signal	
12G-SDI	12Gb/s
6G-SDI	6Gb/s
3G-SDI	2.970Gb/s
HD-SDI	1.485Gb/s
HDMI	720p/1080p/2160p

SDI Input Signal Formats	
SMPTE ST2048-1	4096x2160 (50~60p)
SMPTE ST2082-10 Mode1	3840x2160 60p/59.94p/50p (12G-SDI x 1Ch)
SMPTE ST2081-10 Mode1	3840x2160 30p/29.97p/25p/24p*/23.98p* (6G-SDI x 1Ch)
SMPTE ST425-5	3840x2160 60p/59.94p/50p (3G-SDI x 4Ch)
SMPTE ST274	3840x2160 30p/29.97p/25p/24p*/23.98p* (HD-SDI x 4Ch)**
SMPTE ST425	1920x1080 60p/59.94p/50p (3G-SDI LEVEL A)
	1920x1080 60i/59.94i/50i/30p/29.97p/25p /24p*/23.98p* (3G-SDI LEVEL B)
	1280x720 60p/59.94p/50p (3G-SDI LEVEL B)
SMPTE 274M	1920x1080 60i/59.94i/50i/30p/29.97p/25p /24p*/23.98p*
SMPTE-296M	1280x720 60p/59.94p/50p
SMPTE-259M	720x487 59.94i, 720x576 50i

Note * 24p/23.97p : 60p/59.94p Frame-rate Converted Display

HDMI Input Signal Formats	
V2.0	3840x2160 60p/59.94p/50p (RGB/YCbCr 4:4:4 8bpp Mode)
V1.4	3840x2160 30p/29.97p/25p/24p*/23.98p* (RGB/YCbCr 4:4:4 8bpp Mode)
V1.2	1920x1080 60i/59.94i/50i/30p/29.97p/25p /24p*/23.98p* (RGB/YCbCr 4:4:4 8bpp Mode)
	60p/59.94p/50p
	1280x720 60p/59.94p/50p (RGB/YCbCr 4:4:4 8bpp Mode)

Note * 24p/23.97p : 60p/59.94p Frame-rate Converted Display

Audio In	SDI Embedded Audio (Group, Channel Selectable)
Audio Out	Analog Stereo (3.5mm Phone Jack)
Power	AC 100~240V(50~60Hz)
Power Consumption	150 Watts (Max.)
Included Accessories	AC Power Cable, IR Remote, Table Stand



Info & ordering



Monitor In-/Output

LXM-180U

18.5" 4K/UHD 12G-Quad Multi View Monitor



Dimensions

Main Body 442.5 x 309 x 84 (mm) / 17.42 x 12.16 x 3.30 (inch)
With Stand 489.3 x 332.8 x 137.5 (mm) / 19.26 x 13.1 x 5.41 (inch)
Weight 6.6kg / 14.55lbs

Product Highlights

- HDR EOTF (PQ, HLG)
- Custom 3D LUT Import by USB Flash Drive
- Quad-View, Picture-by-Picture Display
- Various Conversion Output
- Quad Link 12G Input to Single Link 12G or 3G Output
- Auto Detection of SDI Payload ID
- Waveform (YCbCr, RGB) / Vector Scope / Histogram
- Audio Level Meter / Phase Meter
- Image Capture & Overlay
- Closed Caption (CC-608, CC-708, OP47)
- Timecode Display
- Marker
- Focus Assist
- Blue/Mono Only
- H Flip, V Flip
- Scan / User Aspect
- Dynamic UMD / Tally



Info & ordering

Size	18.5"
Resolution	1920 x 1080 (16:9)
Pixel Pitch	0.213(H) x 0.213(V) mm
Color Depth	16.7M Colors (8 bit)
Viewing Angle	178°(H)/178°(V)
Luminance of white	500nits
Contrast Ratio	1000:1
Display Area	408.96(H) x 230.04(V) mm

Input	
4 x BNC	12G/6G/3G/HD-SDI A/B/C/D Channel Input
1 x HDMI	HDMI(2.0) Input
2 x SFP	SFP A/B Channel Input
1 x BNC	Reference Input

Output	
4 x BNC	12G/6G/3G/HD-SDI A/B/C/D Channel Output
1 x BNC	Processed Output

Input Signal	
12G-SDI	12Gb/s
6G-SDI	6Gb/s
3G-SDI	2.970Gb/s
HD-SDI	1.485Gb/s
HDMI 2.0	480p/720p/1080p/2160p

SDI Input Signal Formats	
SMPTE ST 2082	3840x2160 (60/50/30/25/24p)
SMPTE ST 2081	3840x2160 (30/25/24p)
SMPTE ST 2036-1	3840x2160(23.98/24/25/29.97/30/50/59.94/60p) 1080p(60/59.94/50/30/29.97/25/24/23.98 /30sF/29.97sF/25sF/24sF/23.98sF) 1080i (60/59.94/50)
SMPTE-425M-A/B	1080i (60/59.94/50)
SMPTE-274M	1080p (30/29.97/25/24/24sF/23.98/23.98sF)
SMPTE-296M	720p (60/59.94/50)
SMPTE-260M	1035i (60/59.94)
SMPTE-125M	480i (59.94)
ITU-R BT.656	576i (50)
SMPTE ST 2048-2	2048x1080(23.98/24/25/29.97/30p/psf, 47.95/48/50/59.94/60p)

Audio Out	Internal Speaker(Stereo 3W x 3W) / Analog Stereo(Phone Jack)
Power	AC 100~240V(50~60Hz), DC 12V/24V
Power Consumption (Approx.)	45W
Included Accessories	AC Power Cord, Table Stand

Color Innovation (LogiColor - new color engine & LogiCAL - new calibration software) is supported

The latest generation of 4K UHD HDR Monitors.

LXM-180P

18.4" 4K/UHD 12G-Quad Multi View Monitor



Dimensions

Main Body 442.5 x 309 x 91.8 (mm) / 17.42 x 12.16 x 3.61 (inch)
With Stand 489.3 x 332.8 x 137.5 (mm) / 19.26 x 13.1 x 5.41 (inch)
Weight 7.2kg / 15.87lbs

Product Highlights

- HDR EOTF (PQ, HLG)
- Custom 3D LUT Import by USB Flash Drive
- Quad-View, Picture-by-Picture Display
- Various Conversion Output
- Quad Link 12G Input to Single Link 12G or 3G Output
- Auto Detection of SDI Payload ID
- Waveform (YCbCr, RGB) / Vector Scope / Histogram
- Audio Level Meter / Phase Meter
- Image Capture & Overlay
- Closed Caption (CC-608, CC-708, OP47)
- Timecode Display
- Marker
- Focus Assist
- Blue/Mono Only
- H Flip, V Flip
- Scan / User Aspect
- Dynamic UMD / Tally

Color Innovation (LogiColor - new color engine & LogiCAL - new calibration software) is supported



Info & ordering

Size	18.4"
Resolution	3840 x 2160 (16:9)
Pixel Pitch	0.035(H) x 0.1065(V) mm
Color Depth	1.07B Colors (10 bit)
Viewing Angle	170°(H) / 170°(V)
Luminance of white	1000nits
Contrast Ratio	1000:1
Display Area	408.96(H) x 230.04(V) mm

Input	
4 x BNC	12G/6G/3G/HD-SDI A/B/C/D Channel Input
1 x HDMI	HDMI(2.0) Input
2 x SFP	SFP A/B Channel Input
1 x BNC	Reference Input

Output	
4 x BNC	12G/6G/3G/HD-SDI A/B/C/D Channel Output
1 x BNC	Processed Output

Input Signal	
12G-SDI	12Gb/s
6G-SDI	6Gb/s
3G-SDI	2.970Gb/s
HD-SDI	1.485Gb/s
HDMI 2.0	480p/720p/1080p/2160p

SDI Input Signal Formats	
SMPTE ST 2082	3840x2160 (60/50/30/25/24p)
SMPTE ST 2081	3840x2160 (30/25/24p)
SMPTE ST 2036-1	3840x2160(23.98/24/25/29.97/30/50/59.94/60p)
	1080p(60/59.94/50/30/29.97/25/24/23.98/30sF/29.97sF/25sF/24sF/23.98sF)
	1080i (60/59.94/50)
SMPTE-425M-A/B	
	1080i (60/59.94/50)
SMPTE-274M	
	1080p (30/29.97/25/24/24sF/23.98/23.98sF)
SMPTE-296M	720p (60/59.94/50)
SMPTE-260M	1035i (60/59.94)
SMPTE-125M	480i (59.94)
ITU-R BT.656	576i (50)
SMPTE ST 2048-2	2048x1080(23.98/24/25/29.97/30p/psf, 47.95/48/50/59.94/60p)

Audio Out	Internal Speaker(Stereo 3W x 3W) / Analog Stereo(Phone Jack)
Power	AC 100~240V(50~60Hz), DC 12V/24V
Power Consumption (Approx.)	64W
Included Accessories	AC Power Cord, Table Stand



Monitor In-/Output

LXM-240U

24" 4K/UHD 12G-Quad Multi View Monitor



Dimensions

Main Body 552.5 x 360.4 x 95.9 (mm) / 21.75 x 14.18 x 3.77 (inch)
With Stand 586.13 x 388.2 x 150 (mm) / 23.07 x 15.28 x 5.90 (inch)
Weight 10kg / 22.04lbs

Product Highlights

- HDR EOTF (PQ, HLG)
- Custom 3D LUT Import by USB Flash Drive
- Quad-View, Picture-by-Picture Display
- Various Conversion Output
- Quad Link 12G Input to Single Link 12G or 3G Output
- Auto Detection of SDI Payload ID
- Waveform (YCbCr, RGB) / Vector Scope / Histogram
- Audio Level Meter / Phase Meter
- Image Capture & Overlay
- Closed Caption (CC-608, CC-708, OP47)
- Timecode Display
- Marker
- Focus Assist
- Blue/Mono Only
- H Flip, V Flip
- Scan / User Aspect
- Dynamic UMD / Tally

Color Innovation (LogiColor - new color engine & LogiCAL - new calibration software) is supported



Info & ordering

Size	23.8"
Resolution	3840 x 2160 (16:9)
Pixel Pitch	0.137(H) x 0.137(V) mm
Color Depth	1.07B Colors (10 bit)
Viewing Angle	178°(H)/178°(V)
Luminance of white	500nits
Contrast Ratio	1200:1
Display Area	525.7(H) x 295.7(V) mm

Input	
4 x BNC	12G/6G/3G/HD-SDI A/B/C/D Channel Input
1 x HDMI	HDMI(2.0) Input
2 x SFP	SFP A/B Channel Input
1 x BNC	Reference Input

Output	
4 x BNC	12G/6G/3G/HD-SDI A/B/C/D Channel Output
1 x BNC	Processed Output

Input Signal	
12G-SDI	12Gb/s
6G-SDI	6Gb/s
3G-SDI	2.970Gb/s
HD-SDI	1.485Gb/s
HDMI 2.0	480p/720p/1080p/2160p

SDI Input Signal Formats	
SMPTE ST 2082	3840x2160 (60/50/30/25/24p)
SMPTE ST 2081	3840x2160 (30/25/24p)
SMPTE ST 2036-1	3840x2160(23.98/24/25/29.97/30/50/59.94/60p)
	1080p(60/59.94/50/30/29.97/25/24/23.98/30sF/29.97sF/25sF/24sF/23.98sF)
	1080i (60/59.94/50)
SMPTE-425M-A/B	
	1080i (60/59.94/50)
SMPTE-274M	
	1080p (30/29.97/25/24/24sF/23.98/23.98sF)
SMPTE-296M	720p (60/59.94/50)
SMPTE-260M	1035i (60/59.94)
SMPTE-125M	480i (59.94)
ITU-R BT.656	576i (50)
SMPTE ST 2048-2	2048x1080(23.98/24/25/29.97/30p/psf, 47.95/48/50/59.94/60p)

Audio Out	Internal Speaker(Stereo 3W x 3W) / Analog Stereo(Phone Jack)
Power	AC 100~240V(50~60Hz), DC 12V/24V
Power Consumption (Approx.)	68W
Included Accessories	AC Power Cord, Table Stand



Monitor In-/Output

LXM-240P

24" 4K/UHD 12G-Quad Multi View Monitor










Dimensions

Main Body 555.4 x 365 x 94 (mm) / 21.86 x 14.37 x 3.70 (inch)
With Stand 586.13 x 392.8 x 150 (mm) / 23.07 x 15.46 x 5.90 (inch)
Weight 13.2kg / 29.10lbs

Product Highlights

- HDR EOTF (PQ, HLG)
- Custom 3D LUT Import by USB Flash Drive
- Quad-View, Picture-by-Picture Display
- Various Conversion Output
- Quad Link 12G Input to Single Link 12G or 3G Output
- Auto Detection of SDI Payload ID
- Waveform (YCbCr, RGB) / Vector Scope / Histogram
- Audio Level Meter / Phase Meter
- Image Capture & Overlay
- Closed Caption (CC-608, CC-708, OP47)
- Timecode Display
- Marker
- Focus Assist
- Blue/Mono Only
- H Flip, V Flip
- Scan / User Aspect
- Dynamic UMD / Tally



Info & ordering

Size	23.8"
Resolution	3840 x 2160 (16:9)
Pixel Pitch	0.137(H) x 0.137(V) mm
Color Depth	1.07B Colors (10 bit)
Viewing Angle	178°(H)/178°(V)
Luminance of white	1800nits
Contrast Ratio	1000:1
Display Area	527.0(H) x 296.5(V) mm

Input	
4 x BNC	12G/6G/3G/HD-SDI A/B/C/D Channel Input
1 x HDMI	HDMI(2.0) Input
2 x SFP	SFP A/B Channel Input
1 x BNC	Reference Input

Output	
4 x BNC	12G/6G/3G/HD-SDI A/B/C/D Channel Output
1 x BNC	Processed Output

Input Signal	
12G-SDI	12Gb/s
6G-SDI	6Gb/s
3G-SDI	2.970Gb/s
HD-SDI	1.485Gb/s
HDMI 2.0	480p/720p/1080p/2160p

SDI Input Signal Formats	
SMPTE ST 2082	3840x2160 (60/50/30/25/24p)
SMPTE ST 2081	3840x2160 (30/25/24p)
SMPTE ST 2036-1	3840x2160(23.98/24/25/29.97/30/50/59.94/60p)
SMPTE-425M-A/B	1080p(60/59.94/50/30/29.97/25/24/23.98/30sF/29.97sF/25sF/24sF/23.98sF)
	1080i (60/59.94/50)
SMPTE-274M	1080i (60/59.94/50)
SMPTE-296M	720p (60/59.94/50)
SMPTE-260M	1035i (60/59.94)
SMPTE-125M	480i (59.94)
ITU-R BT.656	576i (50)
SMPTE ST 2048-2	2048x1080(23.98/24/25/29.97/30p/psf, 47.95/48/50/59.94/60p)

Audio Out	Internal Speaker(Stereo 3W x 3W) / Analog Stereo(Phone Jack)
Power	AC 100~240V(50~60Hz), DC 15V/24V
Power Consumption (Approx.)	145W
Included Accessories	AC Power Cord, Table Stand

Color Innovation (LogiColor - new color engine & LogiCAL - new calibration software) is supported

Monitor In-/Output



LXM-320P

32" 4K/UHD 12G-Quad Multi View Monitor










Dimensions

Main Body 552.5 x 360.4 x 95.9 (mm) / 21.75 x 14.18 x 3.77 (inch)
With Stand 586.13 x 388.2 x 150 (mm) / 23.07 x 15.28 x 5.90 (inch)
Weight 10kg / 22.04lbs

Product Highlights

- HDR EOTF (PQ, HLG)
- Custom 3D LUT Import by USB Flash Drive
- Quad-View, Picture-by-Picture Display
- Various Conversion Output
- Quad Link 12G Input to Single Link 12G or 3G Output
- Auto Detection of SDI Payload ID
- Waveform (YCbCr, RGB) / Vector Scope / Histogram
- Audio Level Meter / Phase Meter
- Image Capture & Overlay
- Closed Caption (CC-608, CC-708, OP47)
- Timecode Display
- Marker
- Focus Assist
- Blue/Mono Only
- H Flip, V Flip
- Scan / User Aspect
- Dynamic UMD / Tally



Info & ordering

Size	23.8"
Resolution	3840 x 2160 (16:9)
Pixel Pitch	0.137(H) x 0.137(V) mm
Color Depth	1.07B Colors (10 bit)
Viewing Angle	178°(H)/178°(V)
Luminance of white	500nits
Contrast Ratio	1200:1
Display Area	525.7(H) x 295.7(V) mm

Input	
4 x BNC	12G/6G/3G/HD-SDI A/B/C/D Channel Input
1 x HDMI	HDMI(2.0) Input
2 x SFP	SFP A/B Channel Input
1 x BNC	Reference Input

Output	
4 x BNC	12G/6G/3G/HD-SDI A/B/C/D Channel Output
1 x BNC	Processed Output

Input Signal	
12G-SDI	12Gb/s
6G-SDI	6Gb/s
3G-SDI	2.970Gb/s
HD-SDI	1.485Gb/s
HDMI 2.0	480p/720p/1080p/2160p

SDI Input Signal Formats	
SMPTE ST 2082	3840x2160 (60/50/30/25/24p)
SMPTE ST 2081	3840x2160 (30/25/24p)
SMPTE ST 2036-1	3840x2160(23.98/24/25/29.97/30/50/59.94/60p)
SMPTE-425M-A/B	1080p(60/59.94/50/30/29.97/25/24/23.98/30sF/29.97sF/25sF/24sF/23.98sF)
	1080i (60/59.94/50)
SMPTE-274M	1080i (60/59.94/50)
SMPTE-296M	720p (60/59.94/50)
SMPTE-260M	1035i (60/59.94)
SMPTE-125M	480i (59.94)
ITU-R BT.656	576i (50)
SMPTE ST 2048-2	2048x1080(23.98/24/25/29.97/30p/psf, 47.95/48/50/59.94/60p)

Audio Out	Internal Speaker(Stereo 3W x 3W) / Analog Stereo(Phone Jack)
Power	AC 100~240V(50~60Hz), DC 12V/24V
Power Consumption (Approx.)	68W
Included Accessories	AC Power Cord, Table Stand

Color Innovation (LogiColor - new color engine & LogiCAL - new calibration software) is supported

Monitor In-/Output



LXM-550U

55" 4K/UHD 12G-Quad Multi View Monitor










Dimensions

Main Body 1262 x 746 x 81.4 (mm) / 49.68 x 29.37 x 3.20 (inch)
With Stand 1262 x 794.5 x 245 (mm) / 49.68 x 31.27 x 9.64 (inch)
Weight 34.2kg / 75.39lbs

Product Highlights

- HDR EOTF (PQ, HLG)
- Custom 3D LUT Import by USB Flash Drive
- Quad-View, Picture-by-Picture Display
- Various Conversion Output
- Quad Link 12G Input to Single Link 12G or 3G Output
- Auto Detection of SDI Payload ID
- Waveform (YCbCr, RGB) / Vector Scope / Histogram
- Audio Level Meter / Phase Meter
- Image Capture & Overlay
- Closed Caption (CC-608, CC-708, OP47)
- Timecode Display
- Marker
- Focus Assist
- Blue/Mono Only
- H Flip, V Flip
- Scan / User Aspect
- Dynamic UMD / Tally



Info & ordering

Size	54.6"
Resolution	3840 x 2160 (16:9)
Pixel Pitch	0.315(H) x 0.315(V) mm
Color Depth	1.07B Colors (10 bit)
Viewing Angle	178° (H)/178° (V)
Luminance of white	700nits
Contrast Ratio	1100:1
Display Area	1209.6(H) x 680.4(V) mm

Input	
4 x BNC	12G/6G/3G/HD-SDI A/B/C/D Channel Input
1 x HDMI	HDMI(2.0) Input
2 x SFP	SFP A/B Channel Input
1 x BNC	Reference Input

Output	
4 x BNC	12G/6G/3G/HD-SDI A/B/C/D Channel Output
1 x BNC	Processed Output

Input Signal	
12G-SDI	12Gb/s
6G-SDI	6Gb/s
3G-SDI	2.970Gb/s
HD-SDI	1.485Gb/s
HDMI 2.0	480p/720p/1080p/2160p

SDI Input Signal Formats	
SMPTE ST 2082	3840x2160 (60/50/30/25/24p)
SMPTE ST 2081	3840x2160 (30/25/24p)
SMPTE ST 2036-1	3840x2160(23.98/24/25/29.97/30/50/59.94/60p)
	1080p(60/59.94/50/30/29.97/25/24/23.98/30sF/29.97sF/25sF/24sF/23.98sF)
SMPTE-425M-A/B	1080i (60/59.94/50)
SMPTE-274M	1080i (60/59.94/50)
	1080p (30/29.97/25/24/24sF/23.98/23.98sF)
SMPTE-296M	720p (60/59.94/50)
SMPTE-260M	1035i (60/59.94)
SMPTE-125M	480i (59.94)
ITU-R BT.656	576i (50)

SMPTE ST 2048-2	2048x1080(23.98/24/25/29.97/30p/psf, 47.95/48/50/59.94/60p)
Audio Out	
	Internal Speaker(Stereo 3W x 3W) / Analog Stereo(Phone Jack)
Power	
	AC 100~240V(50~60Hz)
Power Consumption (Approx.)	
	154W
Included Accessories	
	AC Power Cord, Table Stand

Color Innovation (LogiColor - new color engine & LogiCAL - new calibration software) is supported



Monitor In-/Output

LXM-180P-FM

18.4" 4K/UHD 12G-Quad Multi View Monitor with Rugged Cage










Dimensions

Main Body 442.5 x 309 x 91.8 (mm) / 17.42 x 12.16 x 3.61 (inch)
With Stand 459.5 x 400.6 x 178.02 (mm) / 18.09 x 15.77 x 7.01 (inch)
Weight 8.05kg / 17.74lbs

* All other specifications and features are the same as the LXM-180P model except for weight and dimensions.



Info & ordering



LXM-240P-FM 1,800nits

24" 4K/UHD 12G-Quad Multi View Monitor with Rugged Cage



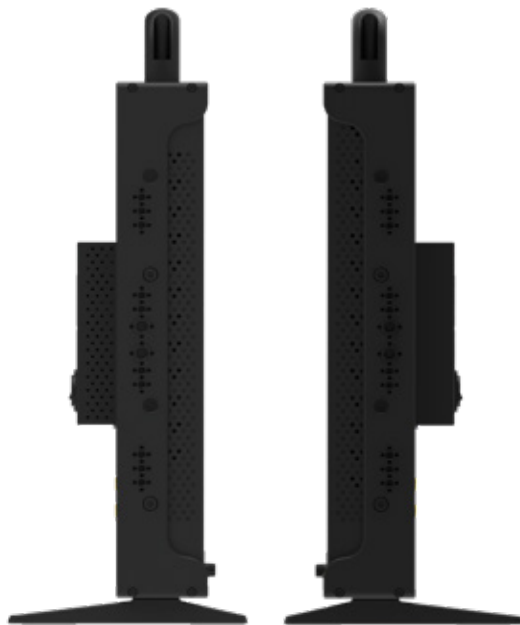
Dimensions

Main Body 555.4 x 365 x 94 (mm) / 21.86 x 14.37 x 3.70 (inch)
With Stand 572.4 x 456.6 x 178.02 (mm) / 22.53 x 17.97 x 7.01 (inch)
Weight 13.7kg / 30.20lbs

* All other specifications and features are the same as the LXM-240P model except for weight and dimensions.



Info & ordering



R-5T

Triple 5.5" LCD Monitors supporting up to 12G-SDI



Dimensions

Main Body 439 x 87.5 x 118.7 (mm) / 17.28 x 3.44 x 4.67 (inch)
With Rack Mount Kit 480.2 x 87.5 x 141.7 (mm) / 18.91 x 3.44 x 5.58 (inch)
Weight 2.86Kg / 6.3lbs

Product Highlights

- 3 x 5.5" Full HD LCD Screen
- 12G/6G/3G-SDI Input & Output
- HDR (P0, HLG, S-Log3)
- Waveform / Vectorscope
- 16ch Audio Level Meter
- Marker
- Dynamic UMD
- Timecode Display
- Luma(Y) Zone Check
- Focus Assist
- 1:1 Scan / Zoom
- Blue/Mono Only
- Luma(Y) Zone Check
- H/V Delay
- Tally



Info & ordering

Monitor In-/Output



R-7D

Dual 7" LCD monitors supporting up to 12G-SDI



Dimensions

Main Body 430 x 132 x 50.5 (mm) / 16.93 x 4.72 x 1.99 (inch)
With Rack Mount Kit 480.8 x 132 x 73 (mm) / 18.92 x 5.19 x 2.87 (inch)
Weight 2.46Kg / 5.42lbs

Product Highlights

- 2 x 7" Full HD LCD Screen
- 12G/6G/3G-SDI Input & Output
- HDR (PQ, HLG, S-Log3)
- Custom 3D LUT Import by USB Flash Drive
- Various Built-in Camera LUTs
- Waveform / Vectorscope
- 16ch Audio Level Meter
- Marker
- Dynamic UMD
- Timecode Display
- Luma(Y) Zone Check
- Focus Assist
- 1:1 Scan / Zoom
- Blue/Mono Only
- Luma(Y) Zone Check
- H/V Delay
- Tally



Info & ordering



R-9D

Dual 10" LCD monitors supporting up to 12G-SDI



Dimensions

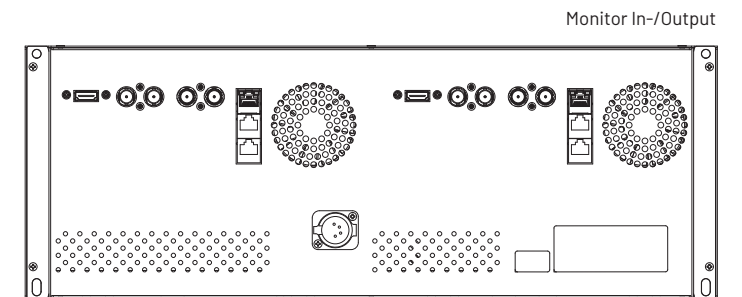
Main Body 481 x 175.8 x 49.5 (mm) / 18.93 x 6.92 x 1.94 (inch)
With Handle 481 x 175.8 x 77 (mm) / 18.93 x 6.92 x 3.03 (inch)
Weight 2.95Kg / 6.50lbs

Product Highlights

- 2 x 10" Full HD LCD Screen
- Max Luminance 800nits
- 12G/6G/3G-SDI Input & Output
- HDR (PQ, HLG, S-Log3)
- Custom 3D LUT Import by USB Flash Drive
- Various Built-in Camera LUTs
- Waveform / Vectorscope
- 16ch Audio Level Meter
- Marker
- Dynamic UMD
- Timecode Display
- Luma(Y) Zone Check
- Focus Assist
- 1:1 Scan / Zoom
- Blue/Mono Only
- Luma(Y) Zone Check
- HNDelay
- Tally
- Ethernet Control



Info & ordering



Specifications

	R-5T	R-7D	R-9D
LCD Panel			
Size	5.5"	7"	10.1"
Resolution	1920 x 1080 (16:9)	1920 x 1200 (16:10)	1920 x 1200 (16:10)
Pixel Pitch	0.0639(W) x 0.0639(H) mm	0.07875(W) x 0.07875(H) mm	0.1128(H) x 0.1128(V) mm
Color Depth	16.7M Colors (8 bit)	16.7M Colors (8 bit)	16.7M Colors (8 bit)
Viewing Angle	160°(H) / 160°(V)	160°(H) / 160°(V)	170°(H) / 170°(V)
Luminance of white	500cd/m2	500cd/m2	800cd/m2
Contrast Ratio	1000 : 1	1000 : 1	1200 : 1
Display Area	122.7(H) x 69.0(V) mm	151.2(H) x 94.5(V) mm	216.58(H) x 135.36(V) mm
Input			
SDI	1 x 12G-SDI Input 1 x 3G-SDI Input	1 x 12G-SDI Input 1 x 3G-SDI Input	1 x 12G-SDI Input 1 x 3G-SDI Input
HDMI	1 x HDMI Input	1 x HDMI Input	1 x HDMI Input
CVBS	-	-	-
Output			
SDI	1 x 12G-SDI Output 1 x 3G-SDI Output	1 x 12G-SDI Output 1 x 3G-SDI Output	1 x 12G-SDI Output 1 x 3G-SDI Output
HDMI	-	-	-
Input Signal			
12G-SDI	11.88Gb/s		
6G-SDI	5.94Gb/s		
3G-SDI	2.970Gb/s		
HD-SDI	1.485Gb/s		
SD-SDI	270 Mb/s		
HDMI	480i / 480p / 576i / 576p / 720p / 1080i / 1080p		
SDI Input Signal Formats			
SMPTE ST 2082	2160(60/50/59.94p)		
SMPTE ST 2081	2160(30/29.97/25/24/23.98p)		
SMPTE-425M-A/B	1080p(60/59.94/50/30/29.97/25/24/23.98/30sF/29.97sF/25sF/24sF/23.98sF)		
	1080i(60/59.94/50)		
SMPTE-274M	1080i(60/59.94/50)		
	1080p(30/29.97/25/24/24sF/23.98/23.98sF)		
SMPTE-296M	720p(60/59.94/50)		
SMPTE-125M	480i(59.94)		
ITU-R BT.656	576i(50)		
SMPTE ST 2048-2	2048x1080p(23.98/24/25/29.97/30/23.98sF/24sF/25sF/29.97sF/30sF)		

	R-5T	R-7D	R-9D
Remote Control & Update			
LAN(Ethernet)	1 x RJ-45 Input, Remote Control		
RS-422(Serial)	1 x RJ-45 Input, Remote Control		
REMOTE	1 x RJ-45 Input, GPI Control		
USB	1 x USB A type, Firmware Update		
General			
Audio In	Embedded Audio	Embedded Audio	Embedded Audio
Audio Out	-	Internal Speakers(Stereo) Analog Stereo(3.5mm Phone Jack)	Internal Speakers(Stereo) Analog Stereo(3.5mm Phone Jack)
Power	DC 12V / 2.9A	DC 12V / 1.85A	DC 12V / 3.4A
Power Consumption	35W	30W	38W
Operating Temperature	0°C to 40°C (32°F to 104°F)	0°C to 40°C (32°F to 104°F)	0°C to 40°C (32°F to 104°F)
Storage Temperature	-20°C to 60°C (-4°F to 140°F)	-20°C to 60°C (-4°F to 140°F)	-20°C to 60°C (-4°F to 140°F)
Dimensions : Main Body	439.0 x 87.5 x 118.7(mm) 17.28 x 3.44 x 4.67(inch)	430.0 x 120.0 x 50.5(mm) 16.93 x 4.72 x 1.99(inch)	481.0 x 175.8 x 60.5(mm) 18.93 x 6.92 x 2.38(inch)
Dimensions : with Stand or Rack	480.2 X 87.5 X 141.7(mm) 18.91 X 3.44 X 5.58(inch)	480.8 x 132.0 x 73.0(mm) 18.92 x 5.19 x 2.87(inch)	481.0 x 175.8 x 88.0(mm) 18.93 x 6.92 x 3.46(inch)
Dimensions : Shipping Box	555.0 x 180.0 x 250.0(mm) 21.85 x 7.08 x 9.84(inch)	555.0 x 165.0 x 230.0(mm) 21.85 x 6.50 x 9.06(inch)	555.0 x 230.0 x 165.0(mm) 21.85 x 9.06 x 6.50(inch)
Weight (with Stand or Rack)	2.90kg / 6.39lbs	2.46kg / 5.42lbs	2.95kg / 6.50lbs
Basic Accessories	AC Power Cord DC Power Adapter Rack Mount Kit(Body)	AC Power Cord DC Power Adapter Rack Mount Kit(Body)	AC Power Cord DC Power Adapter Rack Mount Kit(Body)
Optional Accessories	-	-	-

*The specifications above may be changed without notice.

FHD Studio Monitors with SFP module & Ember+ Protocol

S-42P-N

42" FHD Studio Wall Monitor with SFP Module & Ember+ Protocol



Dimensions

Main Body 985 x 588 x 79(mm) / 38.78 x 23.14 x 3.11(inch)

With Stand 985 x 636.5 x 245(mm) / 38.78 x 25.05 x 9.65(inch)

Weight 25kg / 55.12lbs

Product Highlights

- 2 x 12G-SDI Input and Loopout
- 12G-SDI Input to 3G-SDI Downscale Output
- Processed Monitor Output
- Picture-by-Picture Display
- HDR (PQ, HLG, S-LOG3)
- Custom 3D LUT Import by USB Flash Drive
- Auto Detection of SDI Payload ID
- Image Capture & Overlay
- Waveform (YCbCr, RGB) / Vector Scope / Histogram
- Audio Level Meter / Audio Phase Meter
- Fast Mode
- Focus Assist / Marker
- Closed Caption in Multi Languages (CC-608, CC-708, OP47)
- Blue/Mono Only
- Timecode Display
- Remote Control & FW Update via Ethernet
- Dynamic UMD / Tally
- H Flip, V Flip



Info & ordering

Size	42"
Resolution	1920 x 1080 (16:9)
Pixel Pitch	0.4845 mm
Color Depth	1.07B Colors
Viewing Angle (Typ.)	178°(H) / 178°(V)
Luminance (Max.)	500nits
Contrast Ratio	4000:1
Display Area	930.24(H) x 523.26(V) mm

Input	
2 x BNC	12G/6G/3G/HD/SD-SDI A/B Input
3 x BNC	YPbPr, CVBS Input
1 x HDMI	HDMI 1.4 Input
2 x SFP	SFP A/B Channel Input
1 x BNC	Reference Input

Output	
2 x BNC	12G/6G/3G/HD/SD-SDI A/B Channel Output
3 x BNC	YPbPr, CVBS Output
1 x BNC	Processed Output

SDI Input Signal Formats	
SMPTTE ST 2082	3840x2160 (60/50/30/25/24p)
SMPTTE ST 2081	3840x2160 (30/25/24p)
SMPTTE ST 2036-1:2009	3840x2160(23.98/24/25/29.97/30/50/59.94/60p)
SMPTTE-425M-A/B	1080p(60/59.94/50/30/29.97/25/24/23.98/30sF/29.97sF/25sF/24sF/23.98sF)
	1080i (60/59.94/50)
SMPTTE-274M	1080p (30/29.97/25/24/24sF/23.98sF)
	720p (60/59.94/50)
SMPTTE-296M	720p (60/59.94/50)
SMPTTE-260M	1035i (60/59.94)
SMPTTE-125M	480i (59.94)
ITU-R BT.656	576i (50)
SMPTTE ST 2048-2:2011	2048x1080(23.98/24/25/29.97/30p/psf, 47.95/48/50/59.94/60p)

Remote Control & Update	
1 x LAN	RJ-45 Input(Ethernet), Firmware Update & Remote Control
1 x REMOTE	RJ-45 Input, GPI Control
2 x RS-422	RJ-45 Input & Output, Monitor Control by TVLogic Protocol or TSL Protocol
1 x USB	USB A type, Firmware Update

General	
Audio In	Analog Stereo (Phone Jack)
Audio Out	Analog Stereo (Phone Jack)
Power	AC 100~240V(50~60Hz)
Power Consumption (Approx.)	TBD
Basic Accessories	AC Power Cord, Stand
Optional Accessories	-

Monitor In-/Output



S-46P-N

46" FHD Studio Wall Monitor with SFP Module & Ember+ Protocol



Dimensions

Main Body 1070.6 x 637.5 x 76.4 (mm) / 42.15 x 25.09 x 3.00 (inch)

With Stand 1070.6 x 686.38 x 245 (mm) / 42.15 x 27.02 x 9.65 (inch)

Weight TBD

Product Highlights

- 2 x 12G-SDI Input and Loopout
- 12G-SDI Input to 3G-SDI Downscale Output
- Processed Monitor Output
- Picture-by-Picture Display
- HDR (PQ, HLG, S-LOG3)
- Custom 3D LUT Import by USB Flash Drive
- Auto Detection of SDI Payload ID
- Image Capture & Overlay
- Waveform (YCbCr, RGB) / Vector Scope / Histogram
- Audio Level Meter / Audio Phase Meter
- Fast Mode
- Focus Assist / Marker
- Closed Caption in Multi Languages (CC-608, CC-708, OP47)
- Blue/Mono Only
- Timecode Display
- Remote Control & FW Update via Ethernet
- Dynamic UMD / Tally
- H Flip, V Flip



Info & ordering

Size	46"
Resolution	1920 x 1080 (16:9)
Pixel Pitch	0.530 mm
Color Depth	1.07B Colors
Viewing Angle (Typ.)	178°(H) / 178°(V)
Luminance (Max.)	450nits
Contrast Ratio	4000:1
Display Area	1018.08(H) x 572.67(V) mm

Input	
2 x BNC	12G/6G/3G/HD/SD-SDI A/B Input
3 x BNC	YPbPr, CVBS Input
1 x HDMI	HDMI 1.4 Input
2 x SFP	SFP A/B Channel Input
1 x BNC	Reference Input

Output	
2 x BNC	12G/6G/3G/HD/SD-SDI A/B Channel Output
3 x BNC	YPbPr, CVBS Output
1 x BNC	Processed Output

SDI Input Signal Formats	
SMPTTE ST 2082	3840x2160 (60/50/30/25/24p)
SMPTTE ST 2081	3840x2160 (30/25/24p)
SMPTTE ST 2036-1:2009	3840x2160(23.98/24/25/29.97/30/50/59.94/60p)
	1080p(60/59.94/50/30/29.97/25/24/23.98/30sF/29.97sF/25sF/24sF/23.98sF)
SMPTTE-425M-A/B	1080i (60/59.94/50)
	1080i (60/59.94/50)
SMPTTE-274M	1080p (30/29.97/25/24/24sF/23.98/23.98sF)
SMPTTE-296M	720p (60/59.94/50)
SMPTTE-260M	1035i (60/59.94)
SMPTTE-125M	480i (59.94)
ITU-R BT.656	576i (50)
SMPTTE ST 2048-2:2011	2048x1080(23.98/24/25/29.97/30p/psf, 47.95/48/50/59.94/60p)

Remote Control & Update	
1 x LAN	RJ-45 Input(Ethernet), Firmware Update & Remote Control
1 x REMOTE	RJ-45 Input, GPI Control
2 x RS-422	RJ-45 Input & Output, Monitor Control by TVLogic Protocol or TSL Protocol
1 x USB	USB A type, Firmware Update

General	
Audio In	Analog Stereo (Phone Jack)
Audio Out	Analog Stereo (Phone Jack)
Power	AC 100~240V(50~60Hz)
Power Consumption (Approx.)	TBD
Basic Accessories	AC Power Cord, Stand
Optional Accessories	-

Monitor In-/Output



S-55P

55" FHD Studio Wall Monitor with SFP Module & Ember+ Protocol



Dimensions

Main Body 1262 x 736 x 76.4 (mm) / 49.68 x 28.97 x 3 (inch)

With Stand 1262 x 784.5 x 245 (mm) / 49.68 x 30.88 x 9.65 (inch)

Weight 31.8kg / 70.1lbs

Product Highlights

- 42" Full HD Resolution (1920x1080)
- 1.07 Billion Colors (10bit)
- HDR (PQ, HLG, SLOG3)
- Ember+ Protocol (LAWO)
- TSL 3.1/5.0 Support
- Selectable Output via Internal Routing
- 2 x SFP Input/Output
- PBP(Picture By Picture)
- Fast Mode
- Custom 3D LUT Import by USB Flash Drive
- Various Built-in Camera LUTs
- Closed Caption (CC-608/708, CC-KOR, OP47)
- Waveform / Vectorscope (High Resolution)
- 16ch Audio Level Meter
- Dual Markers (Main & Sub)
- Timecode Display
- Dynamic UMD
- User Aspect / Luma(Y') Zone Check



Info & ordering

Size	55"
Resolution	1920 x 1080 (16:9)
Pixel Pitch	0.63 mm
Color Depth	1.07B Colors
Viewing Angle (Typ.)	178°(H) / 178°(V)
Luminance (Max.)	450nits
Contrast Ratio	4000:1
Display Area	1209.6(H) x 680.4(V) mm

Input	
2 x BNC	SDI Input
1 x HDMI	HDMI Input
2 x SFP	In/Out (combined)
1 x DVI - D	DVI Input

Output	
2 x BNC	SDI Output

Input Signal	
3G-SDI	2.970Gb/s
HD-SDI	1.485Gb/s
SD-SDI	270Mb/s
DVI-D (PC mode)	640x480/800x600/1024x768/1366x768/1280x1024/1600x1200/1920x1080/1920x1200
DVI-D (HDMI mode)	1080i(60)/720i(60)/480i(60)/480p(60)
HDMI	1080p(60/59.94/50/30/25/24/23.98)/1080i(60/59.94/50)/720p(60/50)/480p(60)/576p(50)

SDI Input Signal Formats	
SMPTTE-2048	2048x1080p(24/24sF/23.98/23.98sF)
SMPTTE-425M-A/B	1080i(60/59.94/50)
	1080p(60/59.94/50/30/29.97/25/24/23.98/30sF/29.97sF/25sF/24sF/23.98sF)
SMPTTE-274M	1080i(60/59.94/50)
	1080p(30/29.97/25/24/24sF/23.98/23.98sF)
SMPTTE-296M	720p (60/59.94/50)
SMPTTE-125M	480i (59.94)
ITU-R BT.656	576i (50)

Power	AC 100 ~240V (50~60Hz)
Power Consumption (Approx.)	100Watts
Operating Temperature	0°C to 45°C (32°F to 113°F)
Storage Temperature	-20°C to 60°C (-4°F to 140°F)
Included Accessories	AC Power Cord, Remote Control, USB Cover, Table Stand

Monitor In-/Output



• HDR Monitoring

The LXM and SVM Series monitors support various HDR EOTFs, including PQ, HLG, S-Log3, which allow the monitors to display HDR content accurately and faithfully.



• Accurate Color Reproduction with Wide Color Gamut

The LXM and SVM Series monitors offer exceptional color performance, with a DCI-P3 color space coverage of 98% and the ability to display 1.073 billion colors. TVLogic's advanced calibration software ensures accurate color reproduction, resulting in precise and consistent color output.

- LXM-180P: DCI-P3 98%, 10bit Colors
- LXM-180P-FM: DCI-P3 98%, 10bit Colors
- LXM-240U: DCI-P3 98%, 10bit Colors
- LXM-240P: DCI-P3 98%, 10bit Colors
- LXM-240P-FM: DCI-P3 98%, 10bit Colors
- LXM-320P: DCI-P3 97%, 10bit Colors
- SVM-243S: DCI-P3 98%, 10bit Colors

• Custom 3D LUT Import & Processed Output

With the LXM and SVM Series monitors, users can load and apply their own 3D LUT files, generated by color grading tools. The monitors also support output of the custom 3D LUT applied image to another monitor through an independent port, providing additional flexibility in color management and monitoring.



• Reference Input for Genlock

The LXM and SVM series monitors feature a Reference Input for genlock. Genlock (generator locking) is utilized to synchronize multiple cameras. It ensures that if the source is switched from one camera to another, the frame rate, color burst, and line rate remain consistent. This ensures that viewers see the correct picture without distortion or delay. Genlock also ensures proper synchronization among multiple input videos, which is crucial in settings like television studios with multiple cameras.

• Quad-View Display (LXM Series only)

The LXM Series monitors support quad view display, allowing up to four different video inputs to be shown on a single screen simultaneously. These monitors can display a variety of input combinations, including SDI, HDMI, and SFP, providing maximum flexibility and versatility.



• Picture-by-Picture Display

The LXM and SVM series monitors offer an extremely useful and advanced PBP feature that enables side-by-side monitoring of a single input image: SDR on one side and HDR on the other. Additionally, each image can display Waveform and/or VectorScope data. This feature also supports side-by-side monitoring of two different input sources.

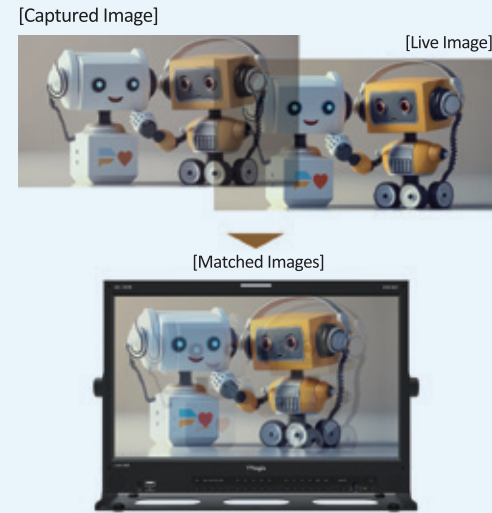


• Auto Detection of SDI Payload ID



This function enables the LXM and SVM Series monitors to automatically detect EOTF and Color Space information from the video Payload ID using SMPTE ST 352 when an SDI signal is connected, and subsequently adjust the settings accordingly.

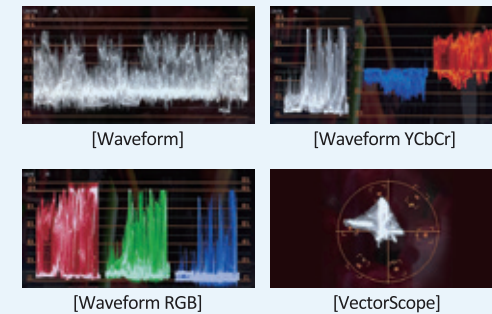
• Image Capture & Overlay



This feature allows users to capture and save an image from the scene and subsequently overlay it onto the live view. The opacity of the captured image can be adjusted during the overlay process. This functionality proves invaluable for achieving scene matching when resuming the shot.

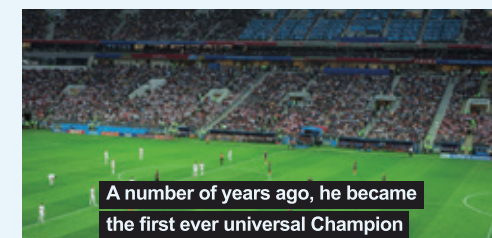
• Various Scope - Waveform, VectorScope

The LXM and SVM Series can display the input signal's Waveform, VectorScope. Both Waveform and VectorScope offer multiple modes and can be shown simultaneously. Additionally, users can opt to display the Waveform of a specific selected line.



• Multi-Language Closed Caption

The LXM and SVM Series monitors can display the closed captions embedded in the SDI signal. Multiple languages are supported in CC708 and OP47 mode. Supported languages are English, Spanish, Portuguese, Japanese, Chinese, German.

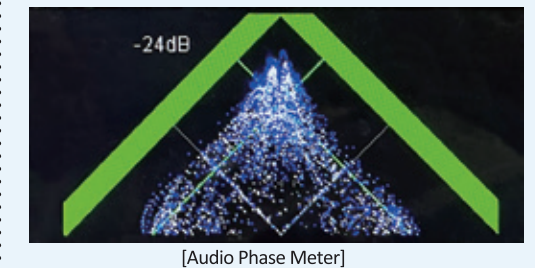


• Fast Mode

This function can be used to minimize the de-interlacing processing time delay and improve the quality of fast moving and fine details under interlaced format. It will not be effective under progressive format. Bypasses deinterlacer, playing back 2 full fields per frame. Also reduces signal processing delay for reduced audio / video delay.



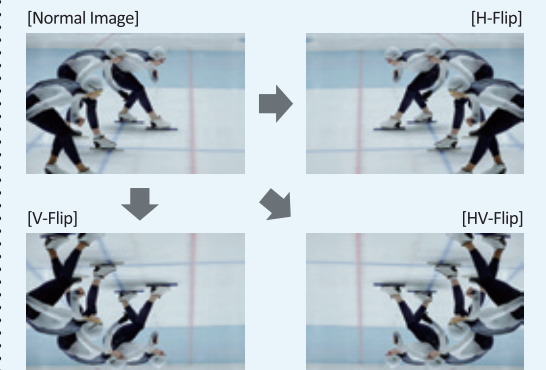
• Various Audio Monitoring Functions



The LXM and SVM series offers the various audio monitoring tools such as Audio Level Meter, Audio Phase Meter. The Audio Level Meter allows users to monitor the audio level up to 16 channels by pairing and grouping the audio channels. The level meter decay time, size, and position are adjustable. The Audio Phase Meter shows how much the signal extends into the stereo field, and where the signal's energy is distributed in the stereo field by drawing a Lissajous pattern.

• H-Flip, V-Flip

The LXM and SVM series monitors provide H-Flip, V-Flip, HV-Flip, which allow the input image to be flipped horizontally, vertically, horizontal & vertically.



Comparison sheets

Field Monitors

FHD Monitors

	F-5A	F-7HS	F-10A
Size / Resolution	5.5" / 1920x1080	7" / 1920x1080	10" / 1920x1080
Max Luminance	500nits	1800nits	300nits
3G-SDI	●	●	●
HDMI	up to 1080p	up to 1080p	up to 2160p
HDMI <-> SDI Cross Conversion	●	●	●
HDR	●	●	●
Color Gamut	BT.709, BT.2020	BT.709, BT.2020	BT.709, BT.2020
EOTF / Gamma	2.2, 2.4, 2.6, P0, HLG, SLOG3	2.2, 2.4, 2.6, P0, HLG, SLOG3	2.2, 2.4, 2.6, P0, HLG, SLOG3
Custom 3D LUT Import	●	●	●
Camera LUT	●	●	●
Camera LUT Through	●	●	●
Audio Level Meter	●	●	●
Waveform / Vectorscope	●	●	●
H/V Flip (Manual & Auto)	●	●	●
Sharpness & Peaking Boost	●	●	●
Time Code	●	●	●
Marker	●	●	●
ARRI Metadata	●	●	●
Focus Assist	●	●	●
Screen Tally	●	●	●
Luma(Y) Zone Check	●	●	●
Range Error	●	●	●
Blue/Mono Only	●	●	●
H/V Delay	●	●	●
User Aspect	●	●	●
Anamorphic Desqueeze	●	●	●
Zoom	●	●	●
Split Zoom	●	●	●
Grid Display	●	●	●
Grid Throughout	●	●	●
Fast Mode	●	●	●
Freeze	●	●	●
Knob Lock	●	●	●
Eco Mode	●	●	●
UMD	×	×	×
CC-608 ANC	×	×	×
CC-608 LINE 21	×	×	×
CC-708	×	×	×

	LVM-095W-N	LVM-180A	LVM-181S	LVM-246A	LVM-242S	LVM-328W
Size / Resolution	9" / 1920x1080	18.5" / 1920x1080	18.5" / 1920x1080	24" / 1920x1200	24" / 1920x1200	31.5" / 1920x1080
Aspect Ratio	16:9	16:9	16:9	16:10	16:10	16:9
Color	16.7M	16.7M	1.06B	16.7M	1.07B	16.7M
Viewing Angle	178°(H) / 178°(V)	178°(H) / 178°(V)	178°(H) / 178°(V)	178°(H) / 178°(V)	178°(H) / 178°(V)	178°(H) / 178°(V)
Max Luminance	400nits	500nits	500nits	600nits	400nits	400nits
Contrast Ratio	750:1	1000:1	1000:1	1000:1	1800:1	1200:1
3G-SDI	●	●	●	●	●	●
HDMI	up to 1080p	up to 1080p	up to 1080p	up to 1080p	up to 1080p	up to 1080p
Analog	×	CVBS	Component	Component	Component	Component
DVI	×	●	●	●	●	●
HDR	×	×	●	×	●	×
Color Gamut	BT.709	BT.709	BT.709, BT.2020 DCI-P3, SGamut3	BT.709	BT.709, BT.2020, DCI-P3, SGamut3	BT.709, SMPTE-C, EBU
EOTF / Gamma	2.2, 2.4	2.2, 2.4	1.0 to 3.0, P0, HLG, S-LOG3	2.2, 2.4	1.0 to 3.0, P0, HLG, S-LOG3	1.0 to 3.0
Custom 3D LUT Import	×	×	●	×	●	×
Camera LUT	×	×	●	×	●	×
PBP	●	×	●	×	●	●
Fast Mode	×	×	●	×	●	●
Audio Level Meter	●	●	●	●	●	●
Waveform / Vectorscope	●	●	●	●	●	●
Time Code Display	●	●	●	●	●	●
Marker	●	●	●	●	●	●
Sub Marker	×	×	●	×	●	×
Focus Assist	●	●	●	●	●	●
Luma(Y) Zone Check	●	●	●	●	●	×
Range Error	●	●	●	●	●	●
Blue Only	●	●	●	●	●	●
H/V Delay	●	●	●	●	●	●
User Aspect	●	●	●	●	●	●
Various Scan Modes	●	●	●	●	●	●
Mono	●	●	●	●	●	●
Zoom	●	●	×	●	×	●
UMD	●	●	●	●	●	●
Key Lock	●	●	●	●	●	●
CONFIG. Data Copy/Load	×	×	●	×	●	×
ECO Mode	●	●	●	×	●	×
H/V Flip	●	×	×	×	×	×
CC-608 ANC	●	●	●	●	●	●
CC-608 LINE 21	●	●	●	●	●	●
CC-708	●	●	●	●	●	●
CC-KOR	×	×	●	×	●	●
OP42	×	×	×	×	×	×
OP47	×	×	●	×	●	●



The newest TVLogic monitors have not yet been added to the comparison tables.
For the most up-to-date comparisons, please scan the QR code or visit our website:
www.aspectra.nl/brands/tvlogic



The newest TVLogic monitors have not yet been added to the comparison tables.
For the most up-to-date comparisons, please scan the QR code or visit our website:
www.aspectra.nl/brands/tvlogic

4K/UHD Monitors

	LUM-095G	LUM-181G	LUM-242G	LUM-242H
Size	9"	18.5"	24"	24"
Resolution	1920x1080	1920x1080	3840x2160	3840x2160
Aspect Ratio	16:9	16:9	16:9	16:9
Color Depth	16.7M	16.7M	1.07B	1.07B
Viewing Angle	178°(H) / 178°(V)	178°(H) / 178°(V)	178°(H) / 178°(V)	178°(H) / 178°(V)
Luminance max.	400nits	500nits	500nits	1000nits
Contrast Ratio	750:1	1000:1	1200:1	1000:1
12G-SDI	●	●	●	●
Quad link	●	●	●	●
3G-SDI Level A/B	●	●	●	●
HDMI	up to 2160p	up to 2160p	up to 2160p	up to 2160p
HDR (PQ, HLG)	●	●	●	●
Color Gamut	BT.709, BT.2020	BT.709, BT.2020, DCI-P3, SGamut3	BT.709, BT.2020, DCI-P3, SGamut3	BT.709, BT.2020, DCI-P3, SGamut3
EOTF / Gamma	2.2, 2.4, 2.6, PQ, HLG, SLOG3	2.2, 2.4, 2.6, 2.8, BT.1886, PQ, HLG	2.2, 2.4, 2.6, 2.8, BT.1886, PQ, HLG	2.2, 2.4, 2.6, 2.8, BT.1886, PQ, HLG
Gamut Warning	×	●	●	●
Custom 3D LUT Import	●	×	×	×
Camera LUT	●	×	×	×
Audio Level Meter Display	●	●	●	●
Waveform / Vectorscope	●	●	●	●
Time Code Display	●	●	●	●
Fast Mode	×	×	×	×
Marker	●	●	●	●
Focus Assist	●	●	●	●
Luma(Y') Zone Check	●	●	●	●
Range Error	●	●	●	●
Blue Only	●	●	●	●
H/V Delay	●	●	●	●
User Aspect	●	●	●	●
Scan	●	●	●	●
Mono	●	●	●	●
Zoom	●	×	×	×
UMD	●	●	●	●
Key Lock	●	●	●	●
PBP	×	×	×	×
H/V Flip	●	×	×	×
CC-608 ANC	●	●	●	●
CC-608 LINE 21	●	●	●	●
CC-708	●	●	●	●
CC-KOR	×	×	×	×
OP42	×	×	×	×
OP47	×	×	×	×



The newest TVLogic monitors have not yet been added to the comparison tables. For the most up-to-date comparisons, please scan the QR code or visit our website: www.aspectra.nl/brands/tvlogic

4K/UHD Monitors

	LUM-328G	LUM-430M3	LUM-550M3	LUM-550H
Size	31.5"	43"	54.6"	54.6"
Resolution	3840x2160	3840x2160	3840x2160	3840x2160
Aspect Ratio	16:9	16:9	16:9	16:9
Color Depth	1.07B	1.07B	1.07B	1.07B
Viewing Angle	178°(H) / 178°(V)	178°(H) / 178°(V)	178°(H) / 178°(V)	178°(H) / 178°(V)
Luminance max.	1000nits	500nits	700nits	700nits
Contrast Ratio	1000:1	1000:1	1100:1	1100:1
12G-SDI	●	●	●	●
Quad link	●	●	●	●
3G-SDI Level A/B	●	●	●	●
HDMI	up to 2160p	up to 2160p	up to 2160p	up to 2160p
HDR (PQ, HLG)	●	●	●	●
Color Gamut	BT.709, BT.2020, DCI-P3, SGamut3	BT.709, DCI-P3, BT.2020	BT.709, DCI-P3, BT.2020	BT.709, BT.2020, DCI-P3, SGamut3
EOTF / Gamma	2.2, 2.4, 2.6, 2.8, BT.1886, PQ, HLG	2.2, 2.4, 2.6, PQ, HLG, SLOG3	2.2, 2.4, 2.6, PQ, HLG, SLOG3	2.2, 2.4, 2.6, 2.8, BT.1886, PQ, HLG
Gamut Warning	●	×	×	●
Custom 3D LUT Import	×	●	●	×
Camera LUT	×	●	●	×
Audio Level Meter Display	●	●	●	●
Waveform / Vectorscope	●	●	●	●
Time Code Display	●	●	●	●
Fast Mode	×	×	×	×
Marker	●	●	●	●
Focus Assist	●	×	×	●
Luma(Y') Zone Check	●	×	×	●
Range Error	●	×	×	●
Blue Only	●	×	×	●
H/V Delay	●	×	×	●
User Aspect	●	×	×	●
Scan	●	×	×	●
Mono	●	×	×	●
Zoom	×	×	×	×
UMD	●	×	×	●
Key Lock	●	×	×	●
PBP	×	×	×	×
H/V Flip	×	×	×	×
CC-608 ANC	●	●	●	●
CC-608 LINE 21	●	●	●	●
CC-708	●	●	●	●
CC-KOR	×	×	×	×
OP42	×	×	×	×
OP47	×	×	×	×



The newest TVLogic monitors have not yet been added to the comparison tables. For the most up-to-date comparisons, please scan the QR code or visit our website: www.aspectra.nl/brands/tvlogic

4K/UHD Monitors

Rack Mount Monitors

	LXM-180U	LXM-180P	LXM-240U	LXM-240P	LXM-320P	LXM-550U
Size / Resolution	18.5" / 1920x1080	18.4" / 3840 x 2160	23.8" / 3840 x 2160	23.8" / 3840 x 2160	31.5" / 3840 x 2160	54.6" / 3840 x 2160
Aspect Ratio	16:9	16:9	16:9	16:9	17:9	16:9
Color Depth	16.7M Color(8bit)	1.07B Color(10bit)	1.07B Color(10bit)	1.07B Color(10bit)	1.07B Color(10bit)	1.07B Color(10bit)
Viewing Angle	178°(H) / 178°(V)	170°(H) / 170°(V)	178°(H) / 178°(V)	178°(H) / 178°(V)	178°(H) / 178°(V)	178°(H) / 178°(V)
Max Luminance	500nits	1000nits	500nits	1800nits	1000nits	700nits
Contrast Ratio	1000:1	1000:1	1200:1	1000:1	1450:1	1100:1
12G-SDI	●	●	●	●	●	●
HDMI 2.0	up to 2160p	up to 2160p	up to 2160p	up to 2160p	up to 2160p	up to 2160p
SFP Input	●	●	●	●	●	●
Reference Input	●	●	●	●	●	●
Processed Output	●	●	●	●	●	●
Conversion Output	●	●	●	●	●	●
Quad-View Mode	●	●	●	●	●	●
Picture-by-Picture Mode	●	●	●	●	●	●
HDR vs SDR Comparison	●	●	●	●	●	●
Color Gamut	BT.709, BT.2020 DCI-P3, SGamut3	BT.709, BT.2020 DCI-P3, SGamut3	BT.709, BT.2020 DCI-P3, SGamut3	BT.709, BT.2020 DCI-P3, SGamut3	BT.709, BT.2020 DCI-P3, SGamut3	BT.709, BT.2020 DCI-P3, SGam
EOTF / Gamma	2.2, 2.4, 2.6, 2.8, BT.1886, PQ, HLG	2.2, 2.4, 2.6, 2.8, BT.1886, PQ, HLG	2.2, 2.4, 2.6, 2.8, BT.1886, PQ, HLG	2.2, 2.4, 2.6, 2.8, BT.1886, PQ, HLG	2.2, 2.4, 2.6, 2.8, BT.1886, PQ, HLG	2.2, 2.4, 2.6, 2.8, BT.1886, PQ, HLG
Custom 3D LUT Import	●	●	●	●	●	●
Camera LUT	●	●	●	●	●	●
Image Capture & Overlay	●	●	●	●	●	●
Auto Detection of SDI PID	●	●	●	●	●	●
Waveform	●	●	●	●	●	●
Vectorscope	●	●	●	●	●	●
Histogram	●	●	●	●	●	●
Pixel Color Info Display	●	●	●	●	●	●
Audio Level Meter/Phase Meter	●	●	●	●	●	●
Audio Loudness(LKFS) Meter	●	●	●	●	●	●
Time Code Display	●	●	●	●	●	●
Fast Mode	●	●	●	●	●	●
Marker	●	●	●	●	●	●
Focus Assist	●	●	●	●	●	●
Luma(Y') Zone Check	●	●	●	●	●	●
Range Error	●	●	●	●	●	●
Blue/Mono Only	●	●	●	●	●	●
H/V Delay	●	●	●	●	●	●
H Flip, V Flip	●	●	●	●	●	●
User Aspect	●	●	●	●	●	●
Scan	●	●	●	●	●	●
Dynamic UMD	●	●	●	●	●	●
CC-608/708	●	●	●	●	●	●
OP47	●	●	●	●	●	●
Firmware Update by Ethernet	●	●	●	●	●	●

	R-5T	R-7D	R-9D	RKM-270A	RKM-290A
Size	3 x 5.5"	2 x 7"	2 x 10"	2 x 7"	2 x 9"
Resolution	1920x1080	1920x1200	1920x1200	1024x600	1920x1080
Aspect Ratio	16:9	16:10	16:10	16:9	16:9
Color	16.7M	16.7M	16.7M	16.7M	16.7M
Viewing Angle	160°(H)/160°(V)	160°(H)/160°(V)	160°(H)/160°(V)	160°(H)/160°(V)	176°(H)/176°(V)
Luminance max.	500nits	500nits	800nits	400nits	400nits
Contrast Ratio	1000:1	1000:1	1200:1	800:1	750:1
12G-SDI	●	●	●	✗	✗
3G-SDI	●	●	●	●	●
HDMI	●	●	●	✗	✗
Analog(CVBS)	✗	✗	✗	●	●
HDR	●	●	●	✗	✗
Color Gamut	BT.709, BT.2020	BT.709, BT.2020	BT.709, BT.2020	BT.709	BT.709
EOTF / Gamma	2.2, 2.4, 2.6, PQ, HLG, S-LOG3	2.2, 2.4, 2.6, PQ, HLG, S-LOG3	2.2, 2.4, 2.6, PQ, HLG, S-LOG3	2.2, 2.4	2.2, 2.4
Custom 3D LUT Import	●	●	●	✗	✗
Camera LUT	●	●	●	✗	✗
Fast Mode	●	●	●	✗	✗
Audio Level Meter	●	●	●	●	●
Blue Only	●	●	●	●	●
Focus Assist	●	●	●	●	●
H/V Delay	●	●	●	●	●
Key Lock (Function Key Only)	●	●	●	●	●
Luma(Y') Zone Check	●	●	●	●	●
Marker	●	●	●	●	●
Grid Display	●	●	●	✗	✗
Mono	●	●	●	●	●
Range Error	●	●	●	●	●
Time Code Display	●	●	●	●	●
UMD	●	●	●	●	●
User Aspect	●	●	●	●	●
Various Scan Modes	●	●	●	●	●
Waveform	●	●	●	●	●
Vector Scope	●	●	●	●	●
Zoom	●	●	●	●	●
Freeze	●	●	●	✗	✗
CC-608 ANC	●	●	●	●	●
CC-608 LINE 21	●	●	●	●	●
CC-708	●	●	●	●	●
CC-KOR	✗	✗	✗	✗	✗
OP42	✗	✗	✗	✗	✗
OP47	✗	✗	✗	✗	✗



The newest TVLogic monitors have not yet been added to the comparison tables.
For the most up-to-date comparisons, please scan the QR code or visit our website:
www.aspectra.nl/brands/tvlogic



The newest TVLogic monitors have not yet been added to the comparison tables.
For the most up-to-date comparisons, please scan the QR code or visit our website:
www.aspectra.nl/brands/tvlogic

Wall & SFP Monitors

	S-32P	S-42P	S-46P	S-55P
Size / Resolution	31.5" / 1920x1080	42" / 1920x1080	46" / 1920x1080	55" / 1920x1080
Aspect Ratio	16:9	16:9	16:9	16:9
Color	16.7M	1.07B	1.07B	1.07B
Viewing Angle	178°(H) / 178°(V)	178°(H) / 178°(V)	178°(H) / 178°(V)	178°(H) / 178°(V)
Max Luminance	400nits	450nits	450nits	450nits
Contrast Ratio	1200:1	4000:1	4000:1	4000:1
3G-SDI	●	●	●	●
HDMI	up to 1080p	up to 1080p	up to 1080p	up to 1080p
SFP	●	●	●	●
DVI	●	●	●	●
HDR	●	●	●	●
Color Gamut	BT.709, SMPTE - C, EBU, D - CINEMA, BT.2020	BT.709, SMPTE - C, EBU, D - CINEMA, BT.2020	BT.709, SMPTE - C, EBU, D - CINEMA, BT.2020	BT.709, SMPTE - C, EBU, D - CINEMA, BT.2020
EOTF / Gamma	1.0 to 3.0, P0, HLG, SLOG3	1.0 to 3.0, P0, HLG, SLOG3	1.0 to 3.0, P0, HLG, SLOG3	1.0 to 3.0, P0, HLG, SLOG3
Custom 3D LUT Import	●	●	●	●
Camera LUT	●	●	●	●
PBP	●	●	●	●
Audio Level Meter	●	●	●	●
Waveform / Vectorscope	●	●	●	●
Time Code Display	●	●	●	●
Fast Mode	●	●	●	●
Marker	●	●	●	●
Sub Marker	●	●	●	●
Focus Assist	●	●	●	●
Luma(Y) Zone Check	●	●	●	●
Range Error	●	●	●	●
Blue Only	●	●	●	●
H/V Delay	●	●	●	●
User Aspect	●	●	●	●
Scan	●	●	●	●
Mono	●	●	●	●
Zoom	×	×	×	×
UMD	●	●	●	●
Key Lock	●	●	●	●
CONFIG. Data Copy/Load	●	●	●	●
ECO Mode	●	●	●	●
CC-608 ANC	●	●	●	●
CC-608 LINE 21	●	●	●	●
CC-708	●	●	●	●
CC-KOR	●	●	●	●
OP42	×	×	×	×
OP47	●	●	●	●



The newest TVLogic monitors have not yet been added to the comparison tables. For the most up-to-date comparisons, please scan the QR code or visit our website: www.aspectra.nl/brands/tvlogic

Why choose Aspectra?

- ✓ Every order amount possible
- ✓ Stock keeping
- ✓ Fast delivery
- ✓ Certified service centre

Official TVLogic Partner & Distributor

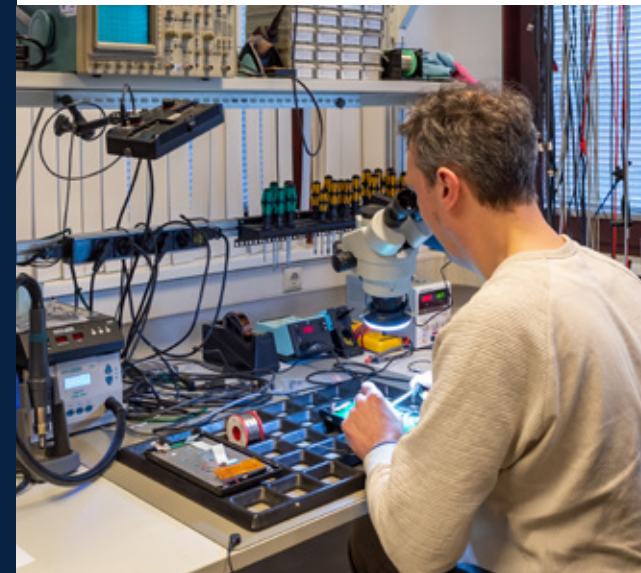
Aspectra

Aspectra B.V.

Spoorhaven 78, 2651 AV,
Berkel & Rodenrijs, The Netherlands
Tel: +31 10 5140680

E-mail: backoffice@aspectra.nl

Website: www.aspectra.nl



TVLogic Service Centre

- ✓ ACE-certified by TVLogic
- ✓ Free technical advice upfront
- ✓ Transparant cost statement on request
- ✓ 6-month repair warranty & stock of spare-parts

Please read our terms and conditions: www.aspectra.nl/terms-and-conditions



YOUR LOCAL RESELLER:



This catalog has been compiled with the greatest possible care. However, mistakes or changes in models, designs, specifications, visuals or any other information are under reserve. No rights can be derived in any way from the content of this catalog. Technical additions or errors do not constitute grounds for compensation claims.