



F-10H

10" HDR High Brightness Field Monitor

Engineered for the Outdoors
Trusted by Professionals.

iVLogic Always ON-AIR

F-10H

10" Full HD Field Monitor engineered for extreme outdoor environments

Featuring a 1400nit ultra-bright display and a strengthened glass front, the F-10H ensures exceptional visibility and protection in direct sunlight and challenging field conditions.

Its slim, lightweight aluminum body offers portability without compromising durability. Equipped with advanced tools like 3D LUT import, HDR, ARRI metadata display, Horizontal Level Meter, and precise waveform monitoring, the F-10H is designed to meet the demands of professional cinematographers, DPs, and field crews in any shooting scenario.

*Monitoring through the **Larger** screen!*



1400nits

Luminance (Max)

1920x1200

Resolution

95%

DCI-P3 Coverage

1080p & 2160p

SDI & HDMI

1000 : 1

Contrast Ratio

16.7M

Color Depth

Why F-10H?



Daylight Visibility

Unmatched clarity under sunlight with 1400nit ultra-bright display



Excellent Sharpness

Displays the excellent sharpness through 1920 x 1080 Full HD resolution & 10" large screen



Slim, Light, Rugged

Rugged Aluminum Body, Strengthened Glass Front, Slim Design, Light Weight make it portable enough



Versatile Interface

3 x 3G-SDI Interfaces
• 1 x SDI In
• 1 x SDI In/Out Select
• 1 x SDI Out

2 x HDMI Interfaces
• 1 x HDMI 2.0 Input
• 1 x HDMI 1.3 Output

SDI↔HDMI
Cross Conversion

HDR

HDR Monitoring

Bring your visuals to life with vibrant colors and stunning contrast, thanks to powerful HDR support

PQ, HLG, S-Log3



Professional Features

Provides all the functions you need for monitoring

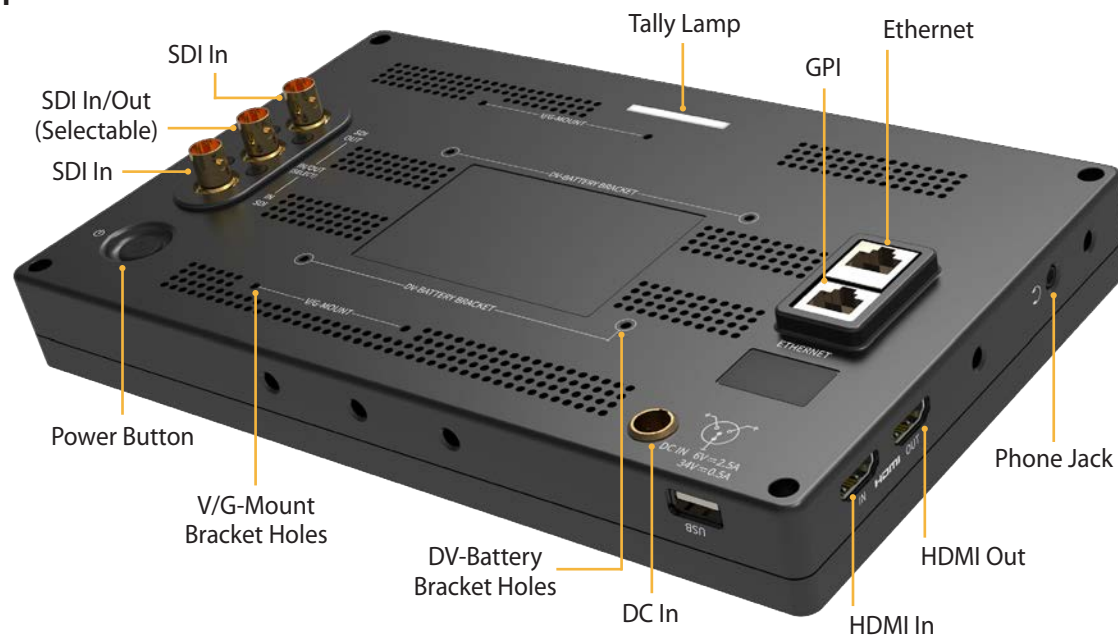
Waveform, Vector Scope, Focus Assist, Markers, Horizontal Level Meter, Custom 3D LUT Import, Integrated Camera LUT, ARRI Metadata Display, and more

Hardware Overview

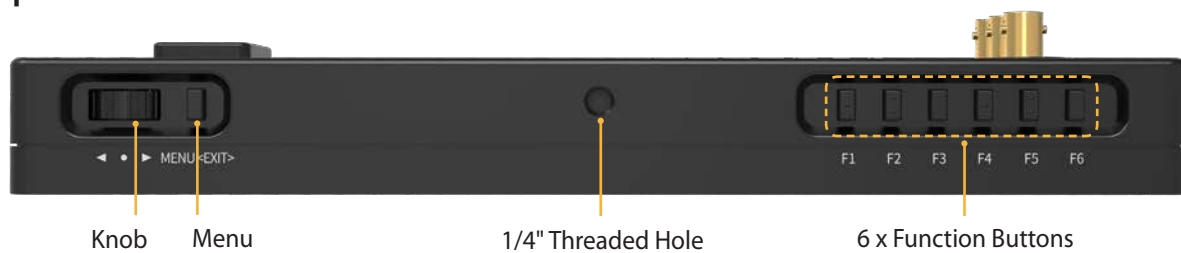
Front



Rear



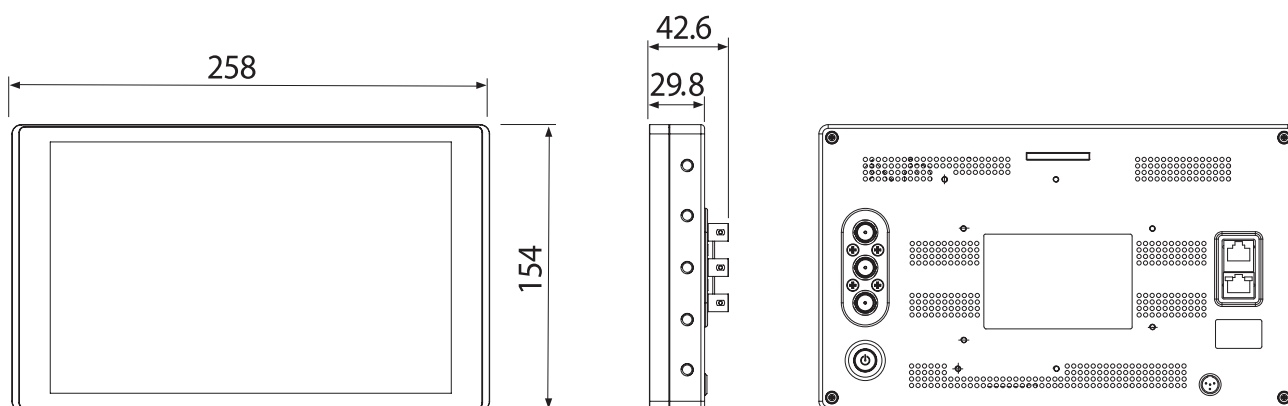
Top



Features & Functions

- 10" 1920x1200 Resolution
- DCI-P3 Coverage 95%
- 16.7 Million Colors
- 1 x 3G-SDI Input & 1 x 3G-SDI Output
- 1 x 3G-SDI Input/Output Selectable
- 1 x HDMI Input & 1 x HDMI Output
- SDI to HDMI Cross Conversion
- 6 x Custom Function Buttons
- Color Standard Mode: HD, UHD, DCI-P3, PQ, HLG, S-Log3, User 1/2/3
- EOTF Gamma : 2.2, 2.4, 2.6, PQ, HLG, S-Log3
- EETF (Electrical-Electrical Transfer Function)
- Custom 3D LUT Import (up to 3 files)
- Integrated Camera LUT: Log-C, C-Log, S-Log1, S-Log2, S-Log3, RED Gamma 3, RED Gamma 4
- Camera LUT Throughout
- Color Temperature: 6500K, 9300K, USER1/2/3
- RGB Gain & RGB Bias Adjustment
- Sharpness Adjustment
- Peaking Boost
- Video Range Adjustment: Limited 109%, Full
- Waveform: YCbCr, RGB, Wide, Full mode
- Line Waveform
- VectorScope: Small, Full mode
- Waveform & VectorScope Dual Display mode
- Various Markers
- Horizontal Level Meter
- Timecode Display: LTC, VITC
- 16Ch Audio Level Meter
- Scan: Zero Scan, Over Scan, Pixel to Pixel
- User Aspect
- H Flip, V Flip, H/V Flip: Manual, Auto
- Focus Assist
- H/V Delay
- Blue/Mono Only
- Various Aspect: 16:9, 4:3, 2.35:1, 1.85:1, 15:9, 16:10
- Anamorphic: 1.3X, 1.5X, 2.0X
- Luma(Y') Zone Check
- Range Error
- Zoom: 10%, 20%, 30%, ..., 90%
- Zoom Split: Left-Top, Right-Top, Left-Bottom, Right-Bottom, Center
- Freeze
- Internal Pattern Display: Color Bar + Plug, Gray
- Tally Lamp (Rear) & Screen Tally
- ARRI Camera Status: LDS Info, Index Letter
- Eco Saving
- Firmware Update & Calibration via USB(A Type)
- Remote Control by GPI, Ethernet
- Low Battery Display
- DC 12V to 34V supported

Dimensions



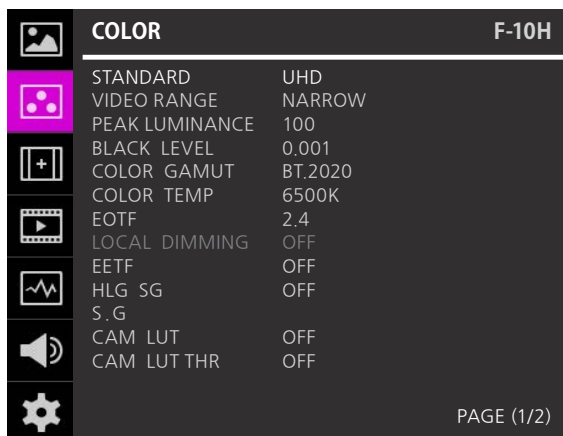
Super-Sharp Details

Experience razor-sharp image clarity with the F-10H. Its ultra-high brightness and advanced display technology deliver incredibly crisp details and accurate visual - even in challenging outdoor environments. Perfect for critical focus and professional field use.



Advanced Color Adjustment OSD

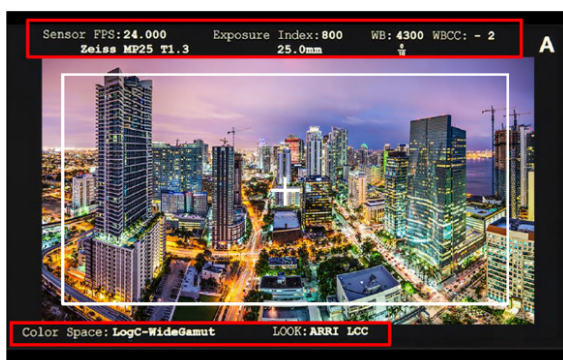
The F-10H provides various color adjustment menus which enable the user to monitor the video signal in the optimal settings.



ARRI Camera Status

This function takes the metadata from the ARRI ALEXA camera and displays the camera status information and the lens data system information on the OSD.

Lens Data System information like lens name, Focal length, Iris, etc. and Index Letter such as project FPS, exposure time, white balance, etc. are displayed on the screen.



Custom 3D LUT Import

Easily load your own custom 3D LUTs via USB to match your unique look. With just a few steps, you can fine-tune colors and ensure your monitor displays exactly what you want - on set or on location.



<Live image from a camera>



<Custom 3D LUT applied image>

Camera LUT

Built-in LUTs for ARRI, Sony, Canon, and RED cameras let you quickly match your monitor to your camera's look. Just select your camera from the menu and get accurate, reliable color on set instantly.

- ARRI: Log-C •Sony: S-Log1, S-Log2, S-Log3
- Canon: C-Log •RED: RED Gamma 3, RED Gamma 4



<Shoot with ARRI Alexa Log-C>



<Camera LUT Log-C to Rec.709 applied>

HDR Monitoring

Experience stunning visuals with our professional broadcast monitor's advanced HDR technology. Enjoy richer colors, deeper contrast, and exceptional detail in every frame, ensuring your content is displayed exactly as intended-perfect for live production.

The F-10H supports PQ, HLG, S-Log3 as HDR EOTF gamma.



<HDR - ON>

Waveform

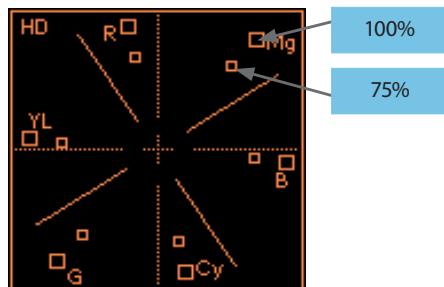
The built-in waveform monitor gives you a clear, real-time view of your image's exposure levels. Whether you're checking brightness, contrast, or dynamic range, it helps you make accurate lighting and camera adjustments - so your shots always look just the way you intend.



<Waveform Y Cb Cr mode>

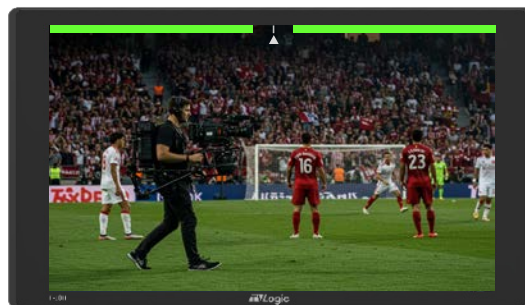
VectorScope

The Vectorscope helps you monitor color balance and saturation with precision. It's an essential tool for matching shots, ensuring skin tones stay natural, and keeping your overall look consistent - whether you're shooting in studio or out in the field.

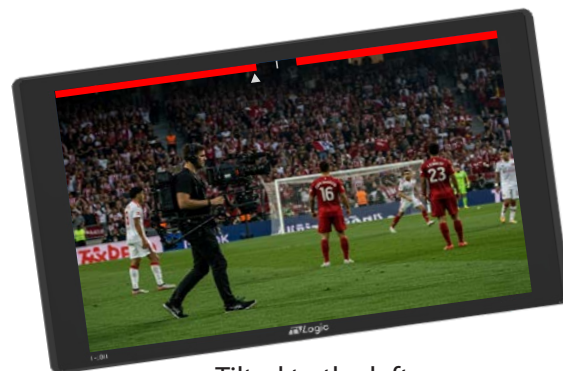


Horizontal Level Meter

The F-10H is equipped with a built-in Horizontal Level Meter that helps users maintain perfect leveling in the field. When the monitor is properly aligned, the on-screen indicator turns green. If the monitor tilts to the left or right, the indicator turns red, alerting the user to adjust the angle. This simple yet effective feature ensures accurate framing and stable setup in any shooting environment.



<Horizontally aligned>



<Tilted to the left>

H/V Flip

With built-in Horizontal and Vertical Flip functions, the F-10H offers flexible viewing options - ideal for use with mirror rigs or unconventional shooting angles. Easily adjust image orientation for a more efficient and adaptable monitoring experience on set. In the [AUTO] mode, the Vertical Flip operates automatically according to the position of the unit.



<Original Image>



<Horizontal Flip>



<Vertical Flip>

Focust Assist

Focus Assist highlights the edges of in-focus areas, making it easy to achieve sharp, precise focus - even in fast-paced shooting environments. Whether you're using manual lenses or working in challenging lighting, this feature ensures your subject stays perfectly sharp every time.



<Focus Assist - Color mode>



<Focus Assist - Mono mode>

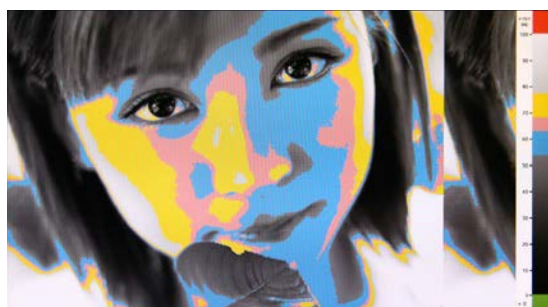
Luma(Y') Zone Check

Analyzes the Luma(Y') level of the input image and displays the selected zone on the screen.

After each pixel's Y' level is analyzed, it is displayed as a certain color or zebra pattern according to the Index on the right side of the screen.



<Luma Zone Check - OFF>



<Luma Zone Check - ON / Color Pattern Type>

Range Error

Analyzes the input signal's Luma(Y') and chroma information(C') and if the input signal exceeds the designated minimum value and maximum value, the pixel shall blink. This function is to help the user to easily find out any unwanted level of signals and for better exposure setting.



<Range Error - OFF>



<Range Error - ON>

User Aspect

User Aspect lets you customize the screen's aspect ratio to match your project's format - whether it's 4:3, 16:9, or something unique. It's a simple way to preview your framing accurately and ensure your shots look exactly how they'll appear in final delivery.



<Height adjusted>



<Width adjusted>



<Height & Width adjusted>

Audio Level Meter

Displays the level of the embedded audio signal together with the video signal input through SDI and HDMI. Up to 16 channels are supported for SDI and 2 channels for HDMI.

Various modes of Level Meter helps the user with the convenient audio monitoring.

- Level Meter channel number(16ch, 8ch, 4ch) and direction(horizontal, vertical) adjustable
- Level Meter grouping available
- Audio channel Pair or Group selectable
- Level Meter size(Small, Large) changeable



<Audio Level Meter - SDI 16 CH>

TimeCode Display

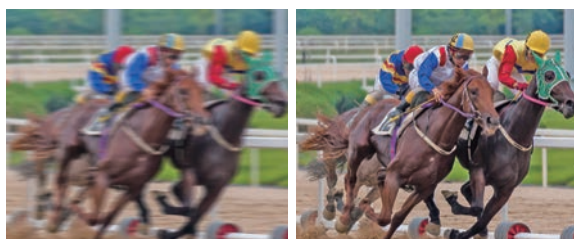
The F-10H supports on-screen TimeCode Display, allowing precise synchronization and easier editing by showing exact time information during recording. It's an essential tool for multi-camera shoots, live productions, and professional post workflows.



<TimeCode - ON>

Freeze

The Freeze function allows you to capture and hold a still frame on screen, making it easier to compare shots, check framing, or analyze details without interrupting the live feed - perfect for critical monitoring situations.



<Freeze - ON>

Blue Only / Mono

Red and Green channels are not used and only Blue or Monochrome channel is used to display the screen.

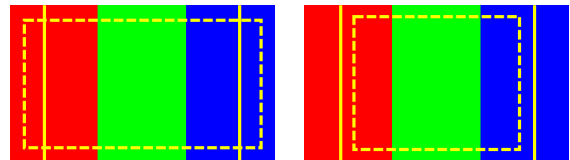
This function is used to adjust the color tones (tones and saturation) of the screen using the SMPTE Color Bar. For example, after displaying the Blue channel, adjust the Color (or Saturation) and Tint (or Hue) so that the original Magenta and Cyan are of the same brightness, and the original Gray and Blue are of the same brightness.



<Blue Only / Mono>

Marker

The F-10H's Marker function provides customizable on-screen guides such as safety area, center markers, and aspect ratio frames. This feature ensures precise framing and composition, helping professionals maintain broadcast standards and deliver perfectly aligned content for seamless live production workflows.

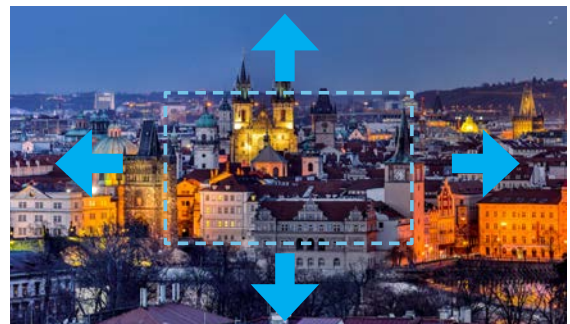


- MARKER : 4:3
- SAFETY AREA : 90%
- FIT MARKER : OFF

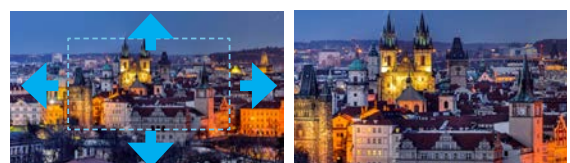
- MARKER : 4:3
- SAFETY AREA : 90%
- FIT MARKER : ON

Zoom

The F-10H features a precise Zoom function that lets you closely inspect image details, ensuring critical focus and accurate monitoring during on-location shoots or live production.



<ZOOM OFF>



<ZOOM 50%>

<ZOOM 75%>

F-10H

LCD	Size	10.1"
	Resolution	1920×1200 (16:10)
	Pixel Pitch	0.1128(H) X 0.1128(V) mm
	Color Depth	16.7M Colors
	Viewing Angle	170°(H) / 170°(V)
	Luminance of white	1400 nits(Max)
	Contrast Ratio	1100 : 1
	Display Area	216.58(H) X 135.36(V) mm
Input	1 X HDMI	HDMI 2.0 Input
	1 X BNC	3G-SDI Input, 3G-SDI In/Out Selectable
Output	1 X HDMI	HDMI Output (SDI-to-HDMI Conversion output)
	1 X BNC	3G-SDI Output (HDMI-to-SDI Conversion output)
Input Signal	3G-SDI	2.97 Gb/s
	HD-SDI	1.485 Gb/s
	SD-SDI	270 Mb/s
	HDMI	480i / 480p / 576i / 576p / 720p / 1080i / 1080p
SDI Input Signal Formats	SMPTE-425M-A/B	1080p(60/59.94/50/30/29.97/25/24/23.98/30sF/29.97sF/25sF/24sF/23.98sF)
		1080i(60/59.94/50)
	SMPTE ST-274M	1080i (60/59.94/50)
		1080p (30/29.97/25/24/24sF/23.98/23.98sF)
	SMPTE ST-296M	720p (60/59.94/50)
	SMPTE ST-125M	480i (59.94)
	ITU-R BT.656	576i (50)
Audio In		Embedded Audio
Audio Out		Analog Stereo (3.5mm Phone Jack)
Power		DC 12V / 1.6A
Power Consumption (Approx.)		20W
Operating Temperature		0°C to 40°C (32°F to 104°F)
Storage Temperature		-20°C to 60°C (-4°F to 140°F)
Dimensions	Main Body	258.0 x 154.0 x 29.8 mm (10.15 x 6.06 x 1.17 inch)
	Shipping Box	320.0 X 240.0 X 87.0 mm (12.59 X 9.44 X 3.42 inch)
Weight		1.20kg / 2.65lbs
Basic Accessories		D-Tap-C Cable, Camera Mount
Optional Accessories		DV Battery Bracket, V-Mount Bracket, G-Mount Bracket, Carrying Case, Sun Hood , DC Power Adapter

*The specifications above may be changed without notice.



TV Logic Always ON-AIR

Vidente Co., Ltd. www.tvlogic.tv  tvlogic_official

12F, ACE HIGH-END TOWER 8, 84, Gasan digital 1-ro, Geumcheon-gu, Seoul, 08590, Korea

Tel. +82-70-8668-6611 Fax. +82-2-6123-3201

E-mail. sales@tvlogic.co.kr